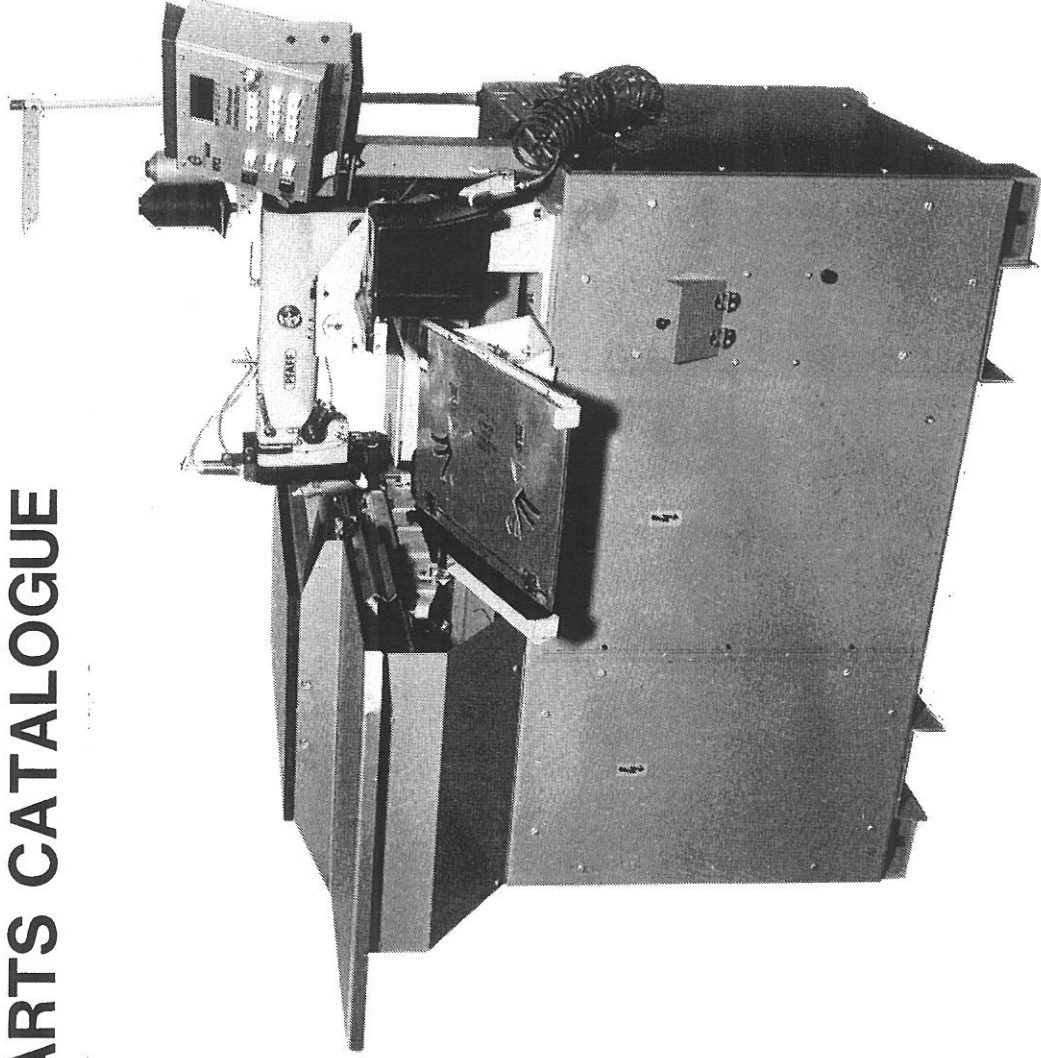


Technical Manual Microprocessor Controlled
Stitcher
3/133/1 MPCS-A

PARTS CATALOGUE



May 1994

BRITISH UNITED SHOE MACHINERY LTD.

P.O. Box 88, Ross Walk, Belgrave
Leicester LE4 5BX, England

Tel: (0116) 261 0111

Telex: 34445 (BUSMC G)

Fax: (0116) 261 0136



ENG

The MICROPROCESSOR CONTROLLED STITCHER (MPCS-A) is a product of the *Upper and Stitching Technology Group* of:

BRITISH UNITED SHOE MACHINERY LTD.

P.O. Box 88, Ross Walk, Belgrave
Leicester LE4 5BX, England

Tel: (0116) 261 0111

Telex: 344445 (BUSMC G)

Fax: (0116) 261 0136



© British United Shoe Machinery Limited Leicester England 1994

Machine Serial No.	
Software Version	

INTRODUCTION

This book consists of two sections:

Section 1: Illustrations

Annotated illustrations of parts from selected mechanisms.

Section 2: Parts List

The Parts List (with index), i.e. the list of all the individual machine parts, separated into mechanisms.

In the illustrations, individual parts are given item numbers.

These item numbers are reproduced in the Parts List to indicate parts which can be found in the illustrations.





Section 1: ILLUSTRATIONS

The illustrations in this section show parts from the following mechanisms:

<u>Mechanism</u>	<u>Page (1.)</u>	
Fig. 1A	ELECTRICAL PARTS: Power Compartment	6
Fig. 1B	ELECTRICAL PARTS: Servo-Drive Compartment	8
Fig. 2A	PNEUMATIC PARTS: Valve Compartment	10
Fig. 2B	PNEUMATIC PARTS: Main Air Supply	12
Fig. 3A	MACHINE-BASE PARTS: Mounting Brackets and X-Axis Rails	14
Fig. 3B	MACHINE-BASE PARTS: X-Axis Limit Switches	16
Fig. 4A	X AND Y CARRIER PARTS: X and Y Carrier	18
Fig. 4B	X AND Y CARRIER PARTS: Y-Axis Limit Switches	20
Fig. 5A	X AND Y DRIVE PARTS: Y Drive	22
Fig. 5B	X AND Y DRIVE PARTS: X Drive	24
Fig. 6	PRESSER-FOOT OPERATING MECHANISM	26
Fig. 7	PNEUMATIC CUTTER	28
Fig. 8	HIGH-LIFT RECIPROCATING PRESSER FOOT	30
Fig. 9	MOVABLE THROAT PLATE	32
Fig. 10A	PALLET-HANDLING PARTS: Pallet Loading (RH)	34
Fig. 10B	PALLET-HANDLING PARTS: Pallet Loading (LH)	36
Fig. 10C	PALLET-HANDLING PARTS: Pallet Stop and Identification	38
Fig. 10D	PALLET-HANDLING PARTS: Pallet Ejection (LH)	40
Fig. 10E	PALLET-HANDLING PARTS: Pallet Ejection (RH)	42
Fig. 11	SEWING MACHINE DRIVE AND BELT GUARD	44
Fig. 12A	'TO ORDER' PARTS: Cable Stitch Option	46
Fig. 12B	'TO ORDER' PARTS: Service Kit	48

Fig. 1A

ELECTRICAL PARTS: Power Compartment

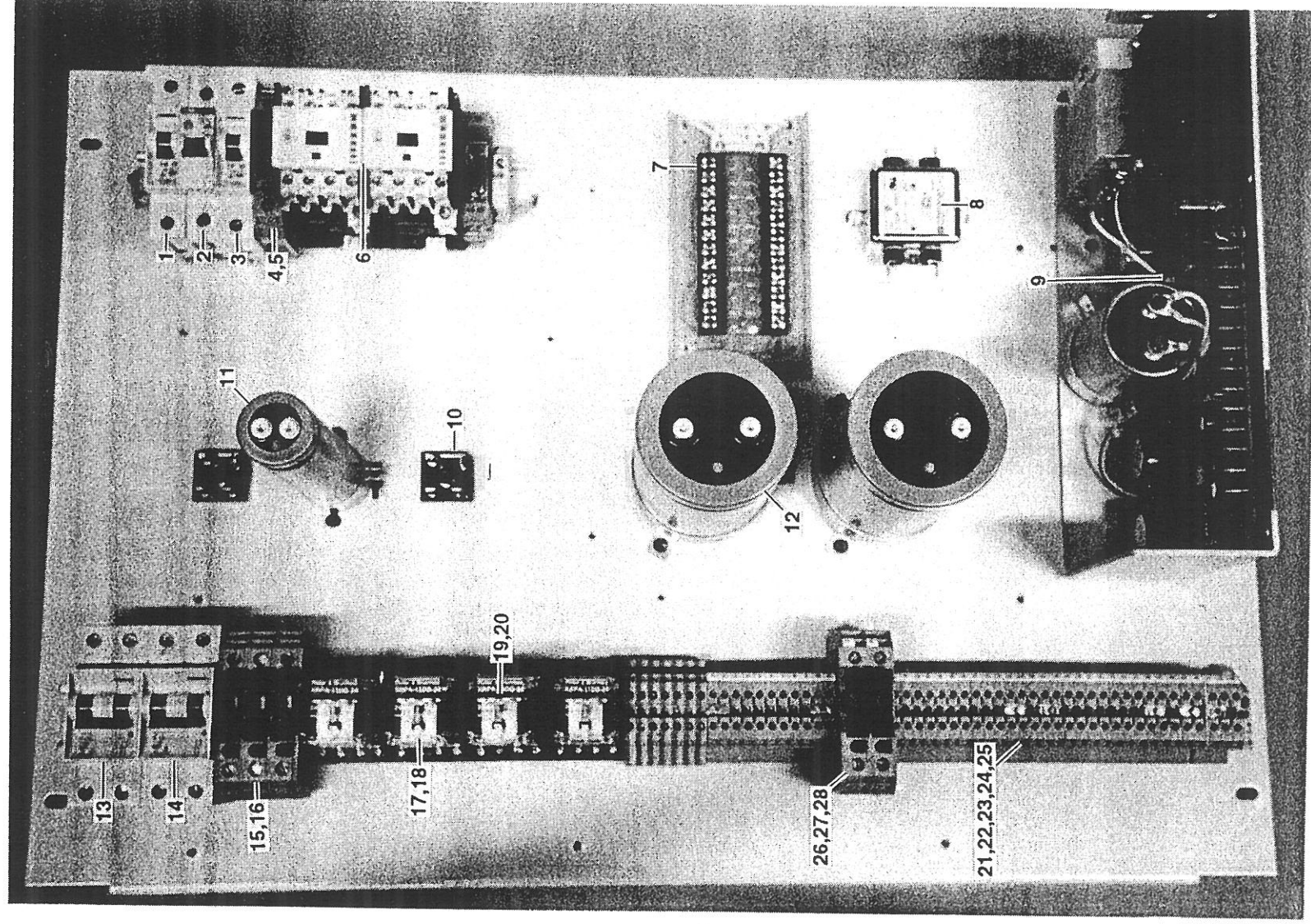


Fig.1A

ELECTRICAL PARTS: Power Compartment

ITEM	PART No.
1	ED-1420ME
2	ED-799ME
3	ED-1412ME
4	ED-1244ME
5	ED-1245ME
6	ED-902ME
7	MPCS-860C1-1
8	XE-840B1
9	XE-641F6
10	XE-882H1
11	XE-833D832
12	XE-833J343
13	ED-1246ME
14	ED-1377ME
15	ED-1244ME
16	ED-1302ME
17	ED-9072E
18	ED-14834
19	ED-9287E
20	XE-602B11
21	ED-9293E
22	ED-9291E
23	ED-1061ME
24	ED-423ME
25	ED-424ME
26	ED-1244ME
27	ED-1245ME
28	XE-409C14

For full details, see pages 3 and 4 in the Parts List.

Fig. 1B ELECTRICAL PARTS: Servo-Drive Compartment

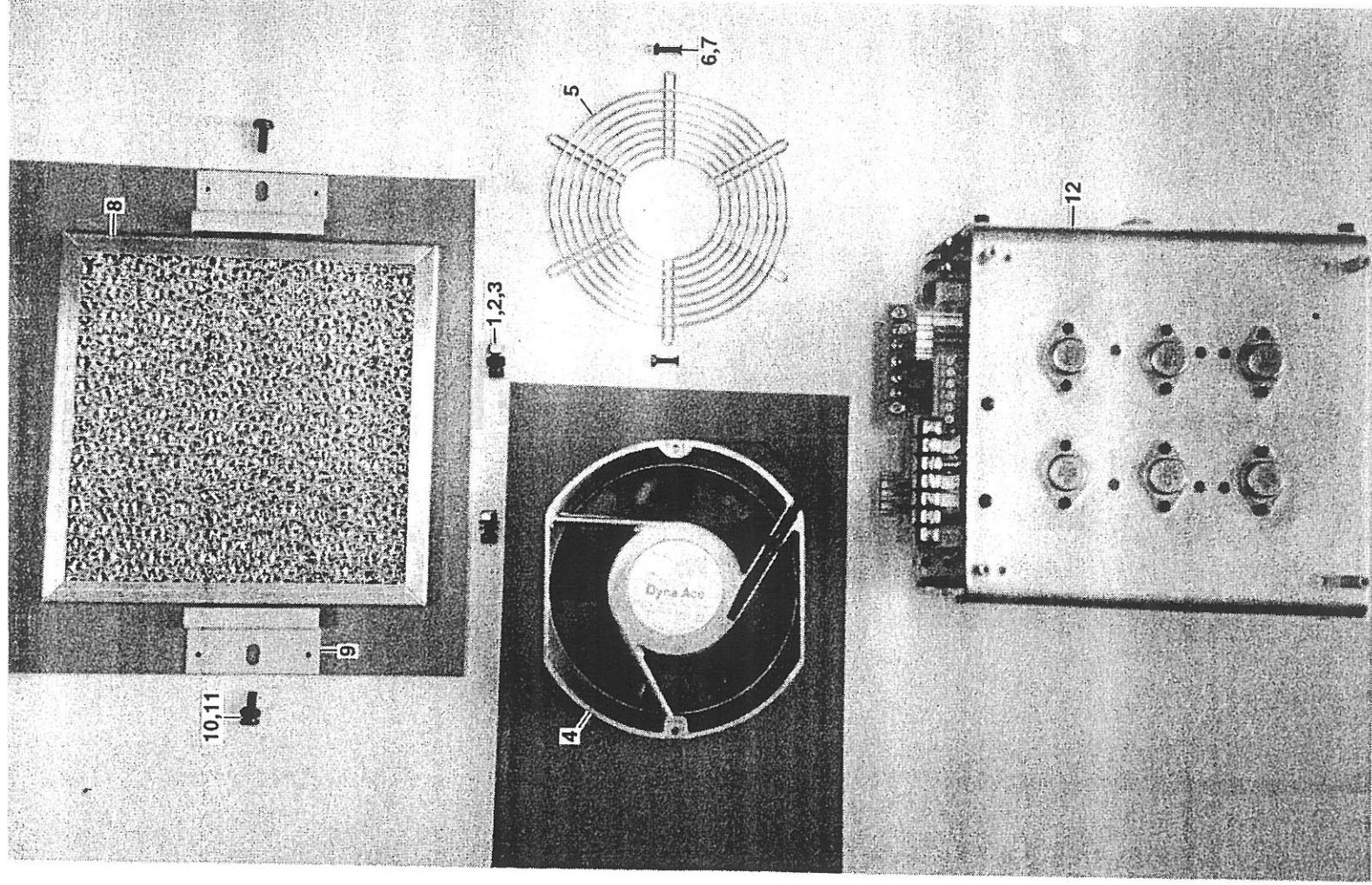


Fig. 1B **ELECTRICAL PARTS: Servo-Drive Compartment**

ITEM	PART No.
1	SL-537ME
2	NL-237ME
3	WL-5ME
4	XE-981B3
5	XE-981M10
6	SL-18ME
7	MH-603A12
8	ACS-435
9	AJS-1553
10	SL-666ME
11	MH-611A14
12	MPCS-368

For full details, see page 9 in the Parts List.

Fig. 2A

PNEUMATIC PARTS: Valve Compartment

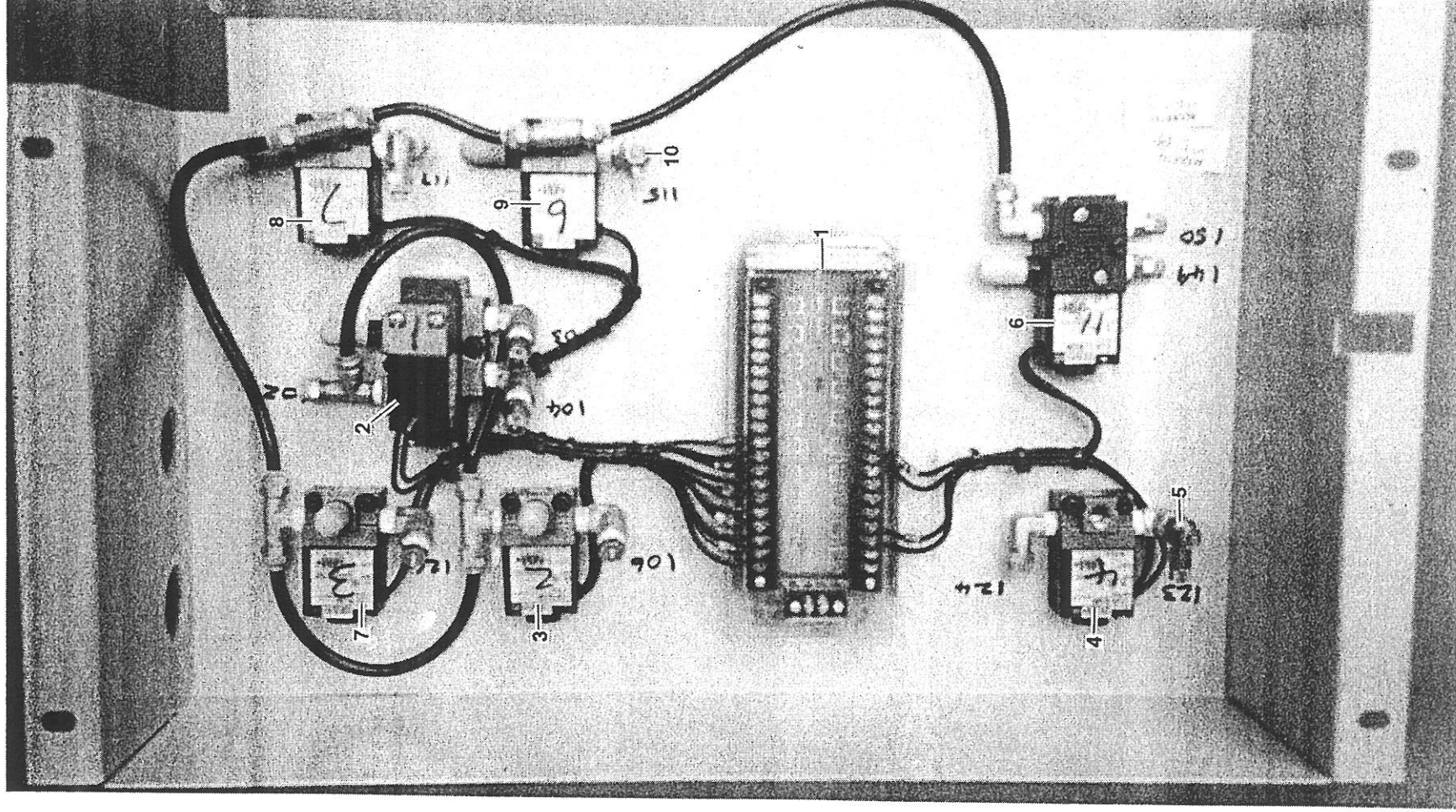


Fig. 2A

PNEUMATIC PARTS: Valve Compartment

ITEM	PART No.
1	MPCS-860B87-1
2	XF-791B502
3	XF-789B501
4	XF-789B501
5	XF-995A2
6	XF-792A611
7	XF-789B501
8	XF-789B501
9	XF-789B501
10	XF-995B2

For full details, see page 10 in the Parts List.

Fig. 2B

PNEUMATIC PARTS: Main Air Supply

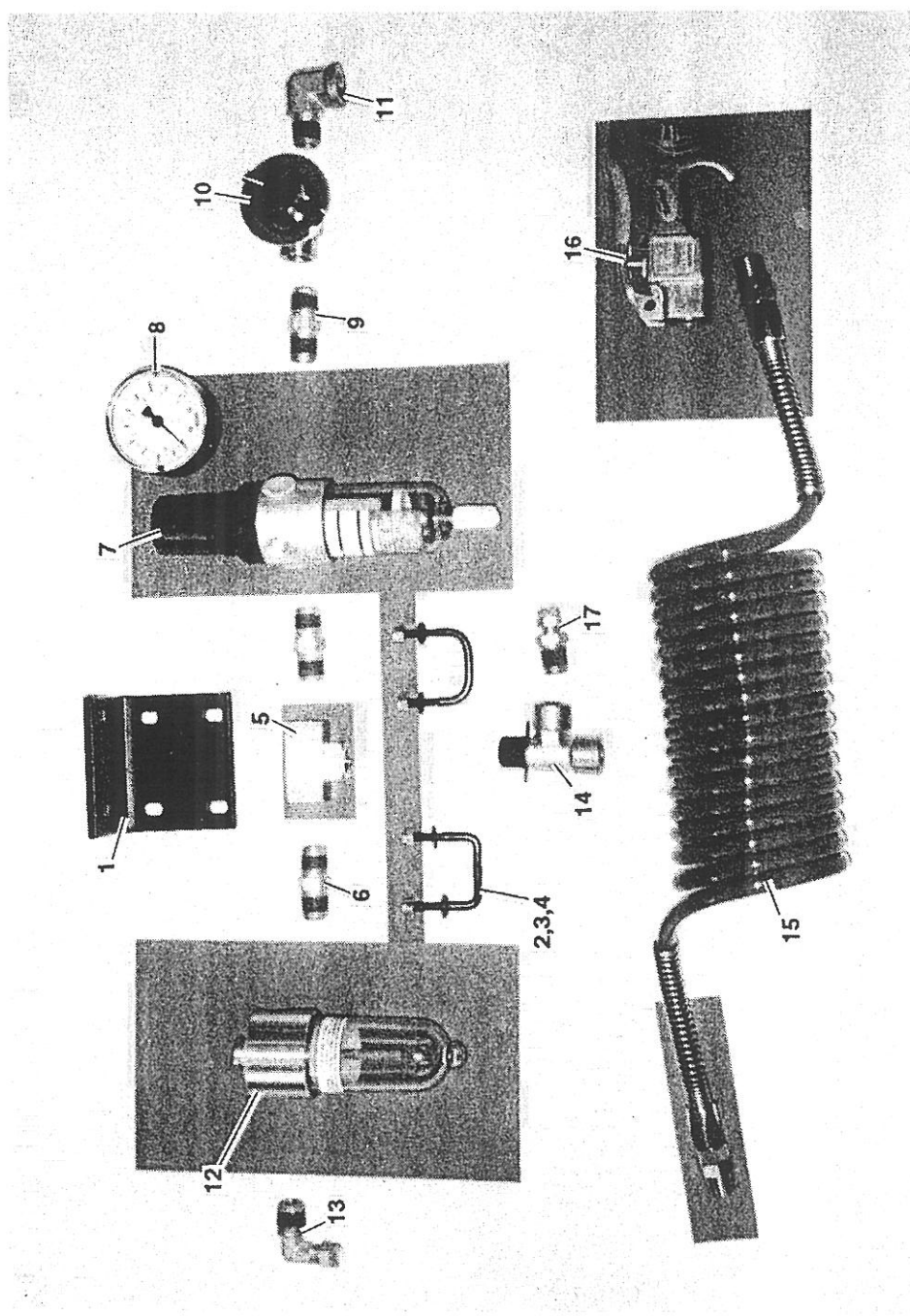


Fig. 2B

PNEUMATIC PARTS: Main Air Supply

ITEM	PART No.
1	AFS-545
2	AJS-1538
3	WL-130IE
4	XH-604A5
5	UPL-1339
6	UPL-1338
7	XF-704B4
8	UPL-261A
9	UPL-1338
10	PCI-323
11	UPL-1342
12	XF-835D1
13	PTL-373
14	UPL-1353
15	XF-115C1
16	MPCS-4068
17	UPL-1341

For full details, see page 11 in the Parts List.

Fig. 3A

MACHINE -BASE PARTS:
Mounting Brackets and X-Axis Rails

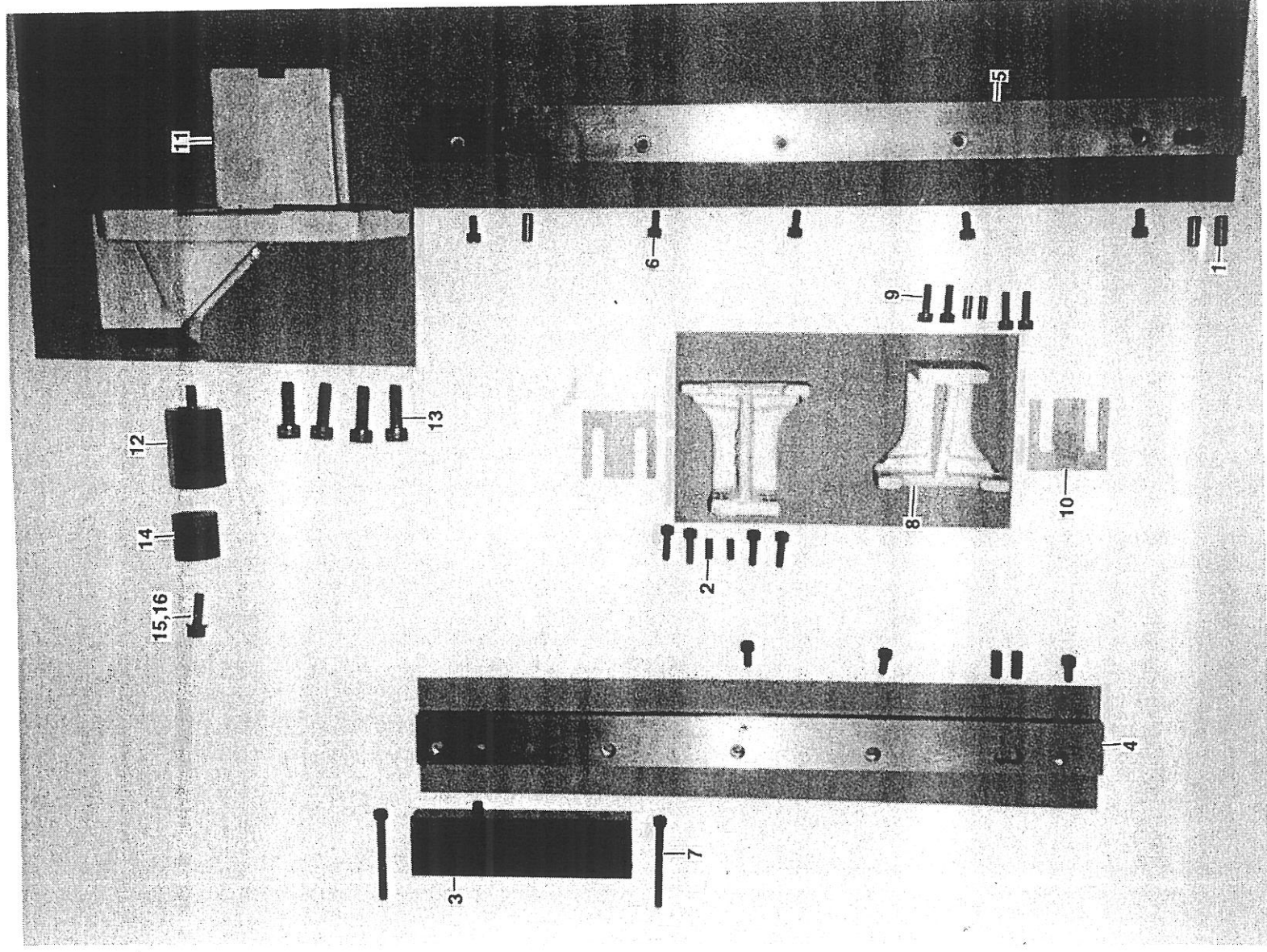


Fig. 3A

MACHINE-BASE PARTS:
Mounting Brackets and X-Axis Rails

ITEM	PART No.
1	PL-461E
2	PL-458E
3	MPCS-488A
4	MPCS-485
5	MPCS-486
6	MH-201B41
7	MH-201D53
8	AJS-102A
9	SL-525ME
10	MPCS-5E
11	AJS-1213
12	MPCS-474
13	MH-201B102
14	XM-899A2
15	SL-1140ME
16	WL-5ME

For full details, see page 12 in the Parts List.

Fig. 3B

MACHINE-BASE PARTS: X-Axis Limit Switches

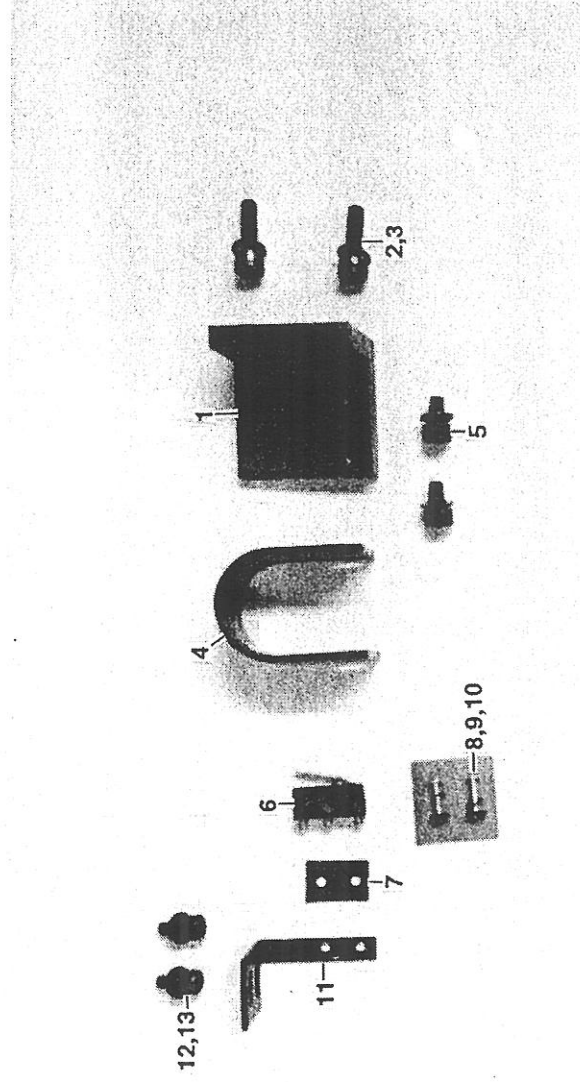


Fig. 3B **MACHINE -BASE PARTS: X-Axis Limit Switches**

ITEM	PART No.
1	AJS-107
2	MH-201B42
3	WL-4ME
4	AJS-106
5	SL-1179ME
6	XE-347A1
7	ED-17576
8	XH-300A6
9	WL-1947T
10	NL-3M3
11	AJS-108
12	MH-201B21
13	WL-3ME

For full details, see page 12 in the Parts List.

Fig. 4A **X AND Y CARRIER PARTS: X and Y Carrier**

ITEM	PART No.	ITEM	PART No.
1	AJS-109	36	AJS-122
2	AJS-110	37	MPCS-4133
3	AJS-111	38	AJS-123
4	SL-528ME	39	AJS-1159
5	WL-4ME	40	MH-201B25
6	XM-542M1	41	WL-3ME
7	NL-16U1	42	AJS-129
8	WL-1303E	43	PL-3390
9	XM-542L1	44	PL-1055
10	XH-60484	45	AJS-124
11	WL-1301E	46	SL-65ME
12	AJS-112	47	NL-3ME
13	AJS-113	48	AJS-127
14	SL-511ME	49	SL-512ME
15	WL-3ME	50	SPGL-416
16	AJS-1549	51	AJS-643
17	AJS-379-1	52	SL-651ME
18	AJS-380	53	AJS-131
19	SL-525ME	54	SL-502ME
20	MPCS-58A	55	AJS-1159
21	SL-527ME	56	SL-515ME
22	AJS-1548A	57	WL-3ME
23	SL-523ME	58	AJS-132
24	WL-4ME	59	AJS-1198
25	AJS-117	60	SL-512ME
26	AFS-385A	61	WL-3ME
27	ACS-132	62	XF-409D1
28	XM-651B3	63	CL-677E
29	PL-5959	64	XF-420A1
30	SL-60ME	65	XF-383B1
31	AJS-119	66	XF-342B1
32	AJS-120	67	AJS-128A
33	ZH-2109	68	AJS-1197
34	SL-513ME	69	AJS-127
35	AJS-121	70	SPGL-510

For full details, see pages 14,15 and 16 in the Parts List.

Fig. 4B X AND Y CARRIER PARTS: Y-Axis Limit Switches

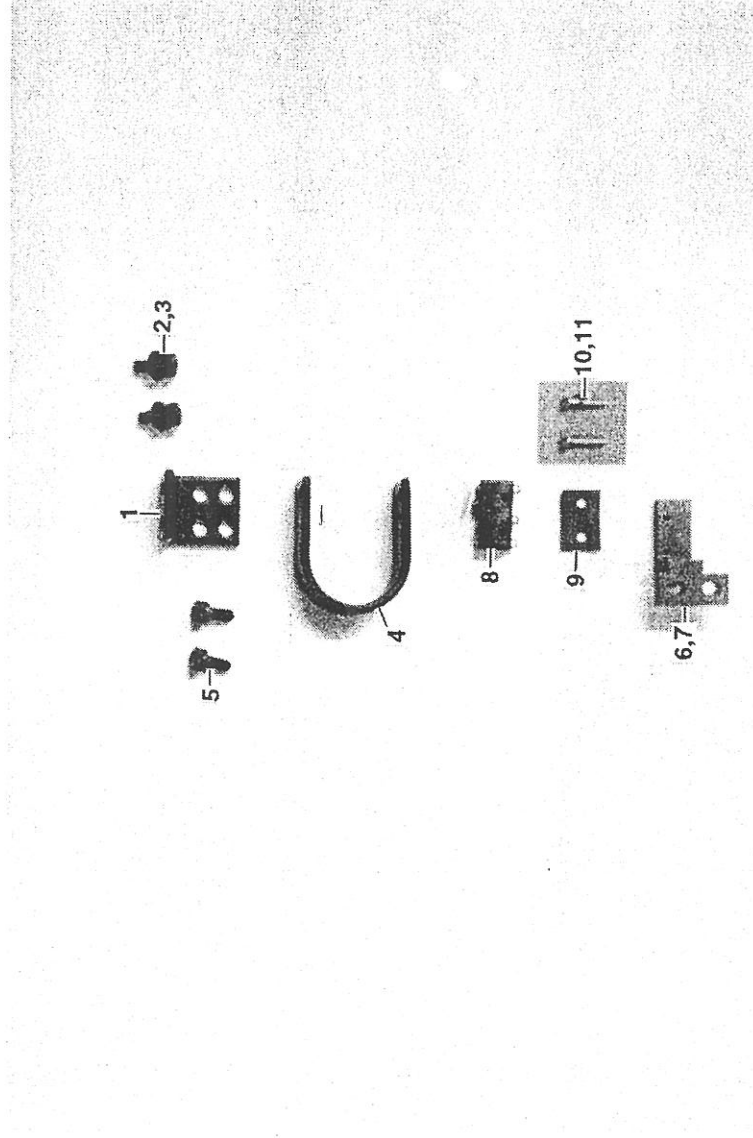


Fig. 4B X AND Y CARRIER PARTS: Y-Axis Limit Switches

ITEM	PART No.
1	AJS-114
2	SL-511ME
3	WL-3ME
4	AJS-115
5	SL-511ME
6	AJS-116 (L.H.)
7	AJS-93 (R.H.)
8	XE-347A1
9	ED-17576
10	XH-300A6
11	WL-1947

For full details, see page 14 in the Parts List.

Fig. 5A

X AND Y DRIVE PARTS: Y Drive

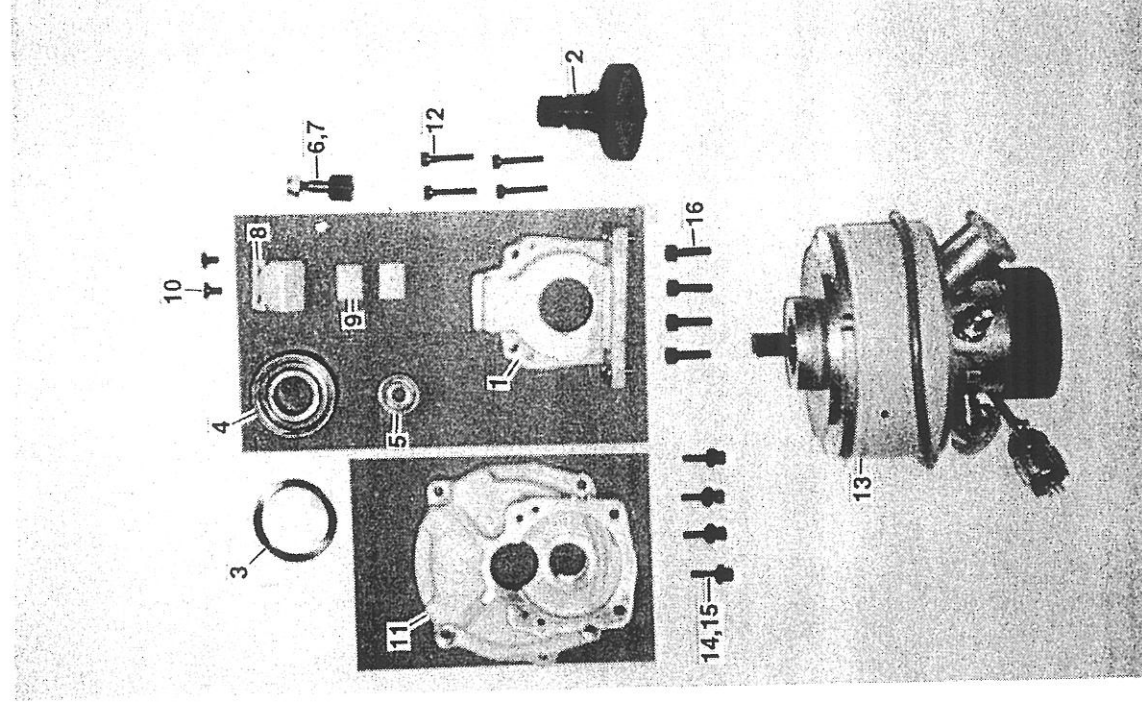


Fig. 5A

X AND Y DRIVE PARTS: Y Drive

ITEM	PART No.
1	AJS-136A
2	AJS-143A
3	XM-590A12
4	XM-503B4
5	XM-501B3
6	XM-542L1
7	XH-604B4
8	AJS-138
9	AJS-113
10	SL-646ME
11	AJS-139A
12	SL-515ME
13	AJS-747
14	SL-9H9
15	WL-174
16	SL-525ME

For full details, see page 17 in the Parts List.

Fig. 5B

X AND Y DRIVE PARTS: X Drive

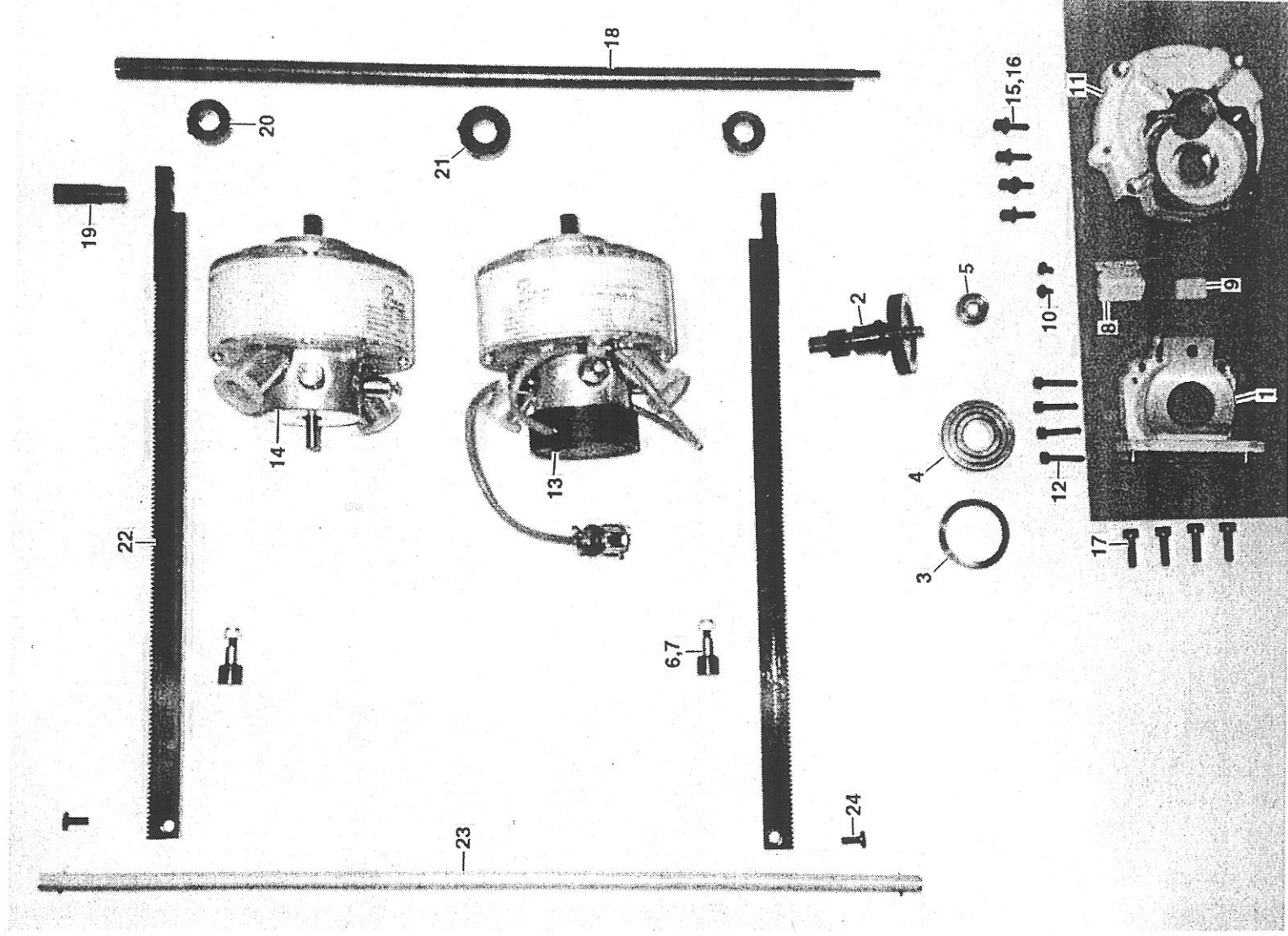


Fig. 5B

X AND Y DRIVE PARTS: X Drive

ITEM	PART No.
1	AJS-136A
2	AJS-130
3	XM-590A12
4	XM-503B4
5	XM-501B3
6	XM-542L1
7	XH-604B4
8	AJS-138
9	AJS-113
10	SL-646ME
11	AJS-139A
12	SL-515ME
13	AJS-747
14	AJS-125
15	SL-9H9
16	WL-174
17	SL-525ME
18	AJS-141
19	AJS-142
20	XM-601A6
21	XM-601A7
22	MPCS-216
23	AJS-134
24	SL-564ME

For full details, see page 17 in the Parts List.

Fig. 6

PRESSER-FOOT OPERATING MECHANISM

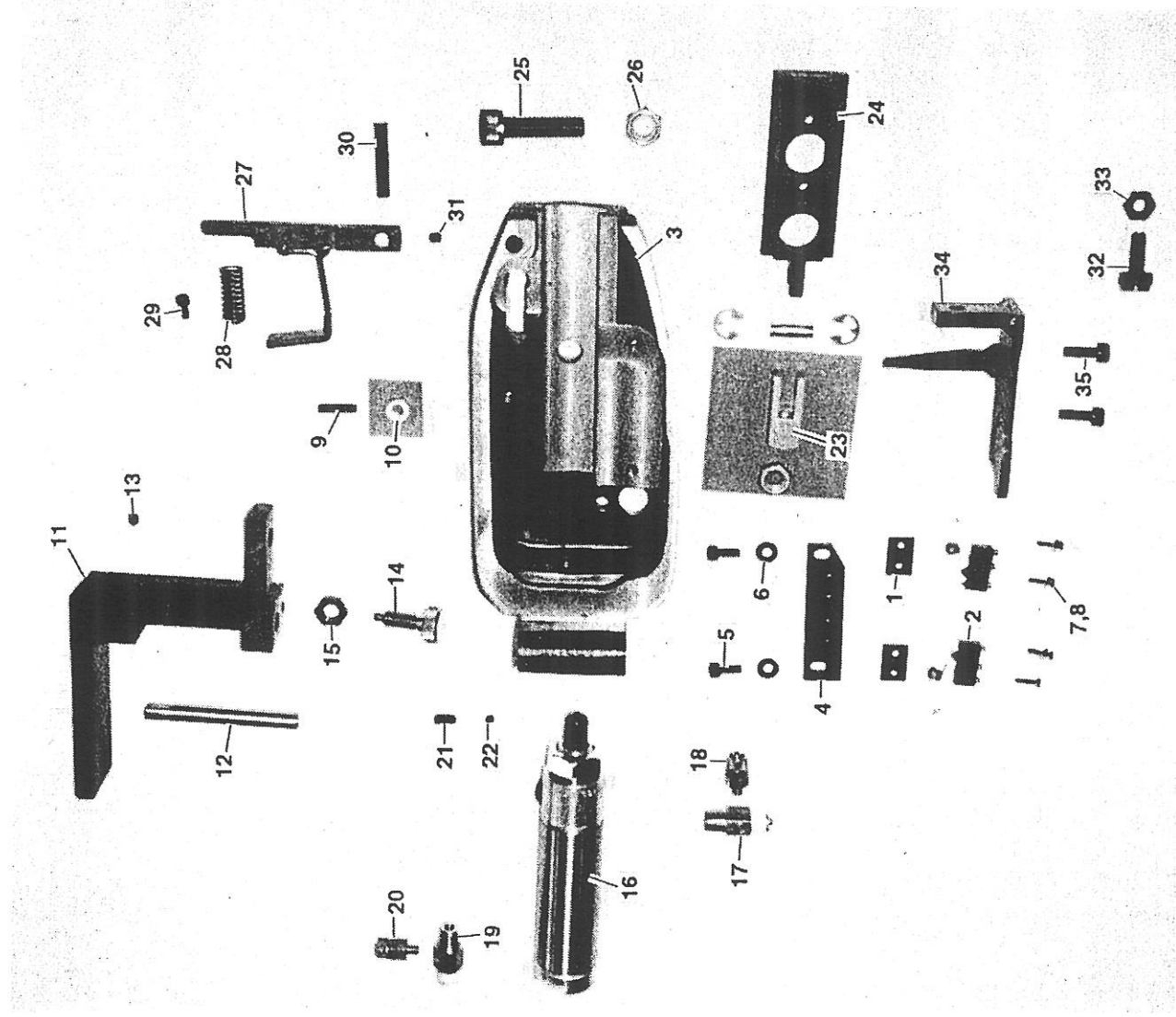


Fig. 6**PRESSER-FOOT OPERATING MECHANISM**

ITEM	PART No.
1	ED-17576
2	XE-347A2
3	ACS-237A
4	ACS-394
5	WL-1300E
6	XH-201C32
7	WL-1572E
8	SL-3D11
9	SL-11S17
10	NL-13M1
11	ACS-236
12	PL-5725
13	SL-1155
14	XM-902A2
15	NL-773E
16	UPL-1517
17	XF-995B2
18	XF-386B1
19	XF-995B2
20	XF-386B1
21	XH-400E54
22	WL-254E
23	ACS-366
24	ACS-235
25	SL-17H17
26	XH-604A8
27	ACS-451
28	ACS-450
29	XH-201C21
30	PL-897
31	SL-11S5
32	ACS-452
33	NL-785ME
34	ACS-453
35	XH-201C42

For full details, see pages 18 and 19 in the Parts List.

Fig. 7

PNEUMATIC CUTTER

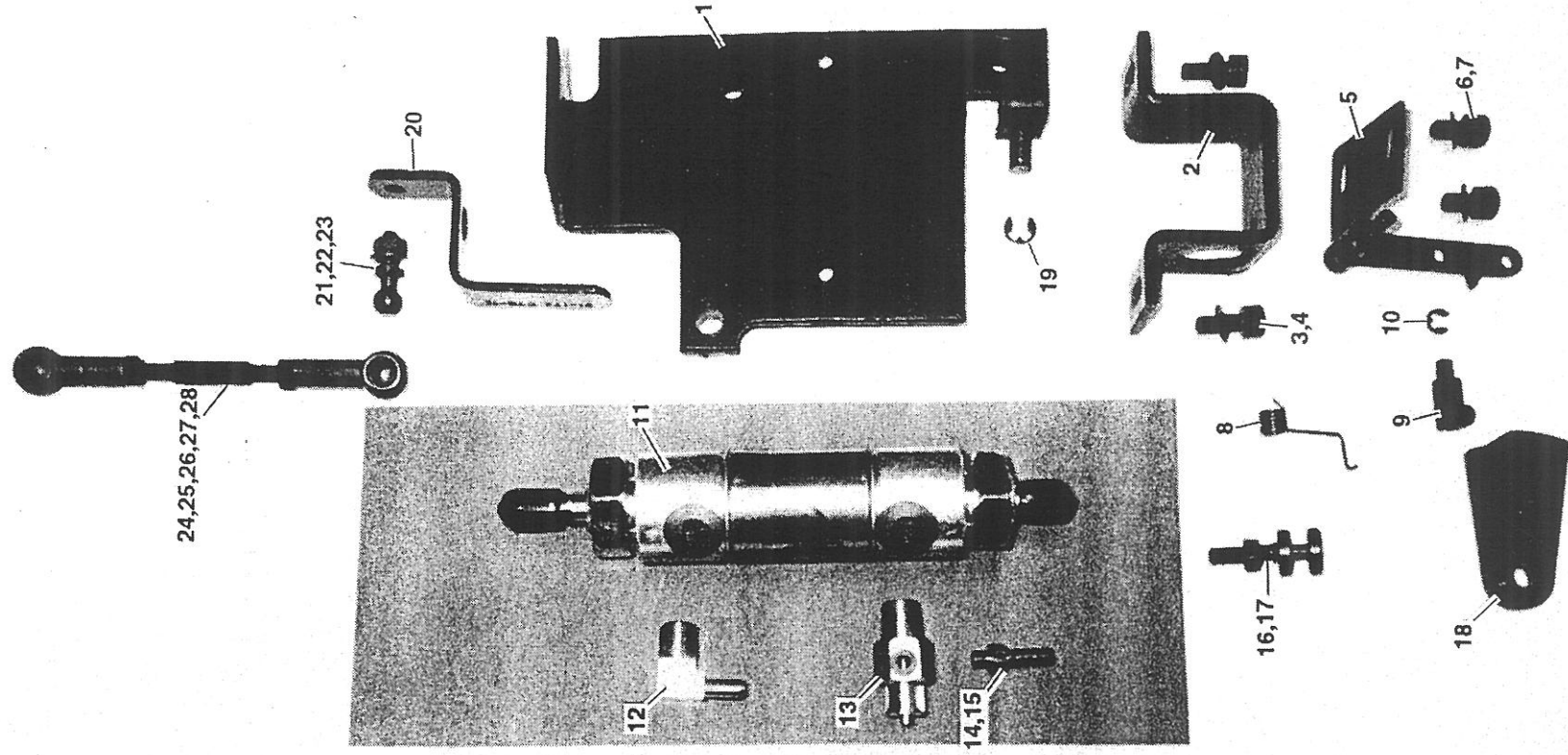


Fig. 7

PNEUMATIC CUTTER

ITEM	PART No.
1	AJS-1270A
2	AJS-1273A
3	SL-524ME
4	WL-4ME
5	PF91-174068-15
6	SL-1179ME
7	WL-4ME
8	PF91-168945-05
9	PF91-174066-92
10	PF12-640130-55
11	AJS-1274
12	XF-370G2
13	XF-995B2
14	ADS-333
15	ZH-2108
16	PF91-167680-05
17	PF12-024171-15
18	PF91-174063-11
19	PF12-640150-55
20	PF91-174070-15
21	PF91-069165-15
22	PF12-305144-15
23	PF12-024171-15
24	PF16-049020-11
25	PF91-174067-15
26	PF12-024171-15
27	PF16-049021-11
28	PF12-024172-15

For full details, see page 20 in the Parts List.

Fig. 8

HIGH-LIFT RECIPROCATING PRESSER-FOOT

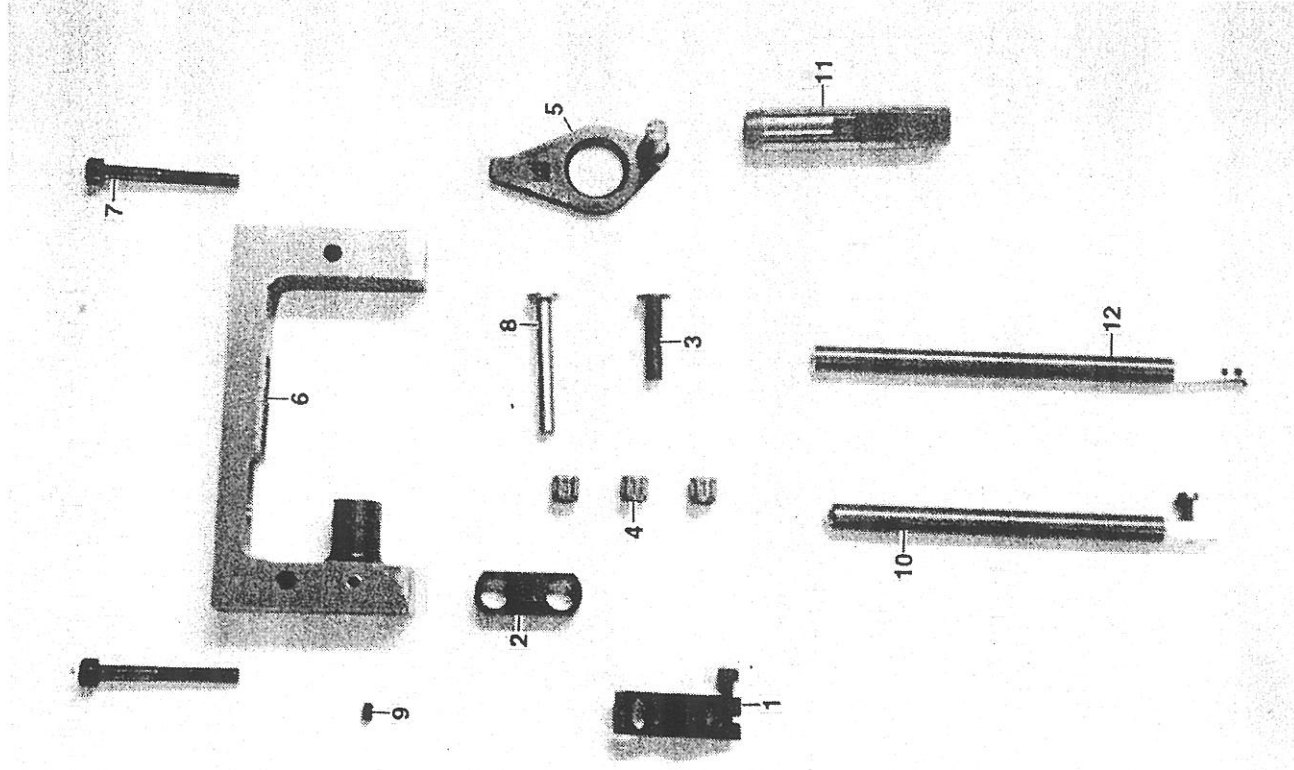


Fig. 8

HIGH-LIFT RECIPROCATING PRESSER-FOOT

ITEM	PART No.
1	AJS-293
2	AJS-295
3	AJS-296
4	PF14-215013-13
5	AJS-291
6	AJS-290
7	SL-1198ME
8	AJS-294
9	SL-60ME
10	AJS-786
11	AJS-784
12	AJS-785

For full details, see page 21 in the Parts List.

Fig. 9

MOVABLE THROAT PLATE

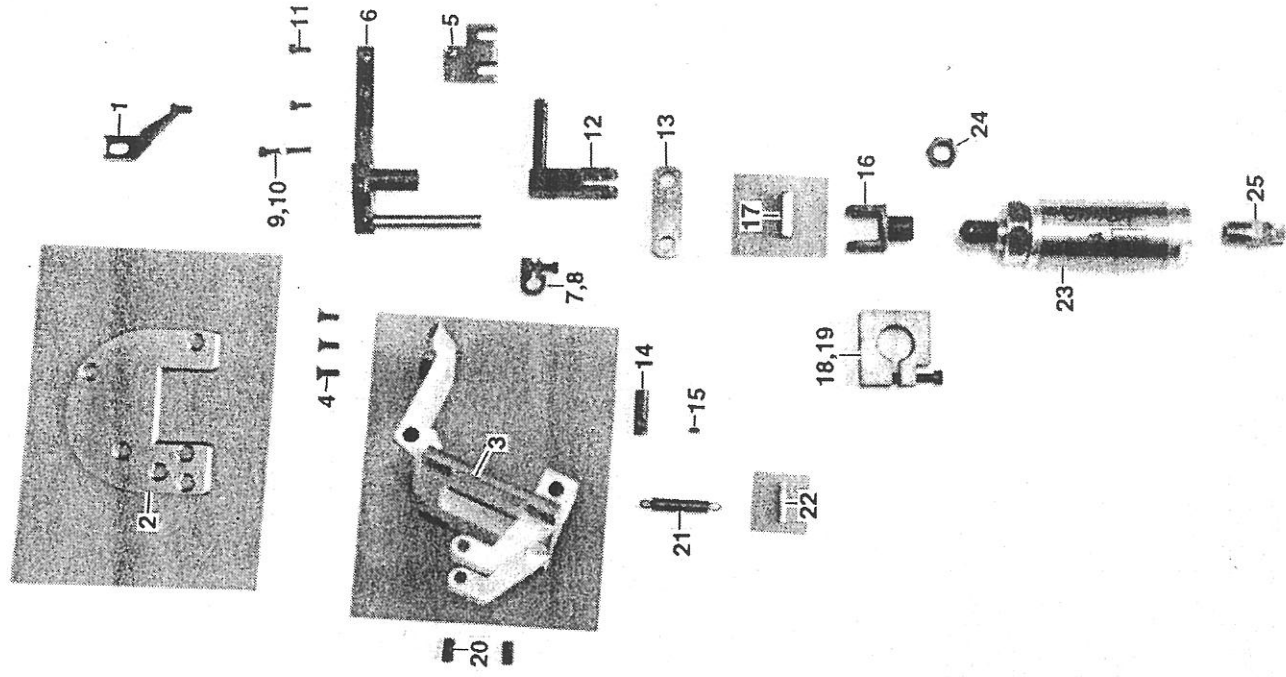


Fig. 9

MOVABLE THROAT PLATE

ITEM	PART No.
1	ACS-988
2	AJS-409
3	AJS-407
4	XH-205C11
5	AJS-494
6	AJS-408
7	CL-678E
8	SL-4H4
9	SL-3H11
10	NL-7M7
11	XH-201C1
12	AJS-214
13	AJS-216
14	AJS-223
15	SL-3N5
16	AJS-221
17	PL-6647
18	AJS-412
19	XH-201C36
20	PL-1332
21	XM-110E25
22	XH-707A17
23	XF-412A41
24	NL-671E
25	XF-386B3

For full details, see page 22 in the Parts List.

Fig. 10A

PALLET-HANDLING PARTS: Pallet Loading (RH)

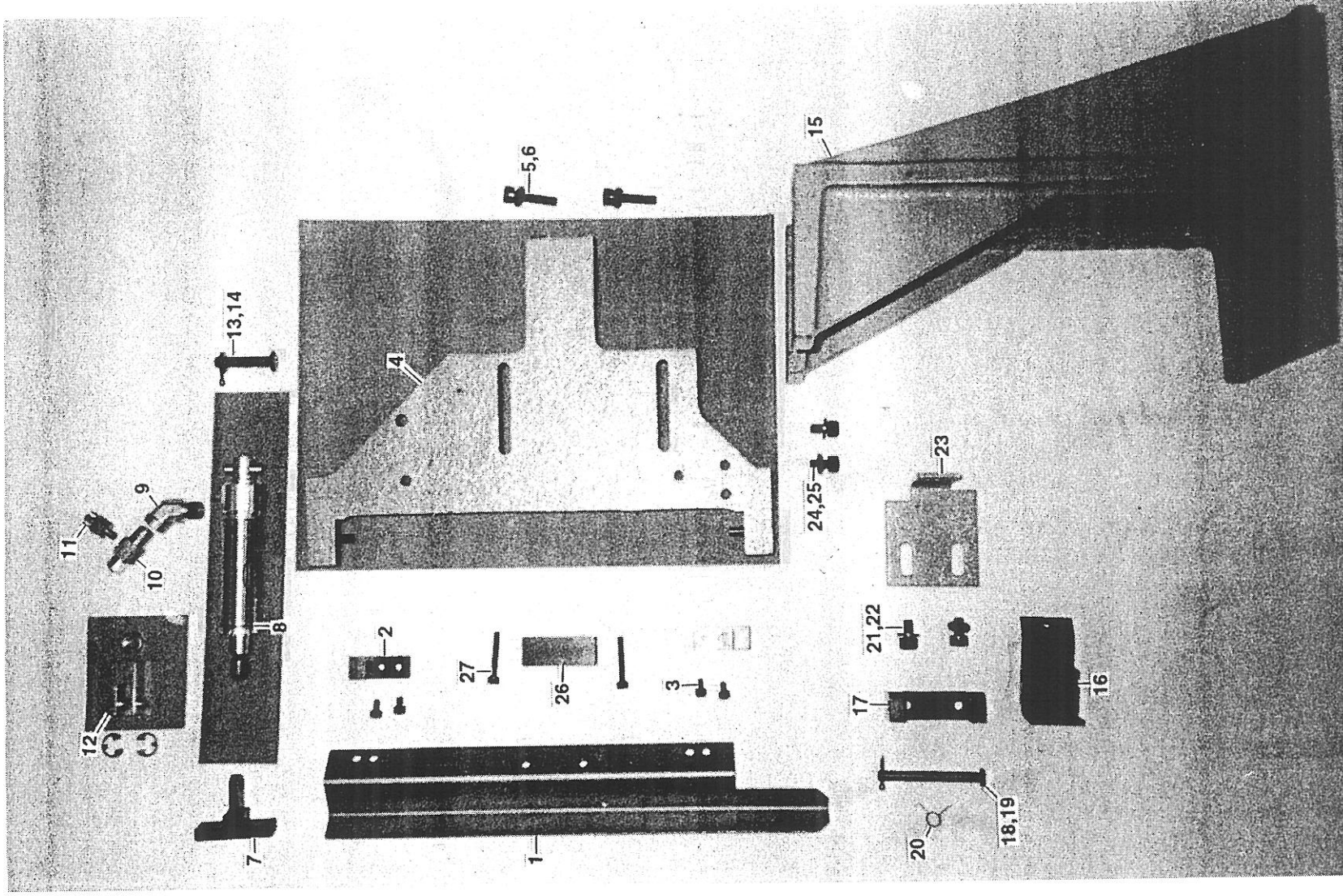


Fig. 10A **PALLET-HANDLING PARTS: Pallet Loading (RH)**

ITEM	PART No.
1	AJS-1220
2	AJS-74
3	MH-201B20
4	MPCS-484
5	SL-538ME
6	WL-5ME
7	AJS-1219
8	XF-413C10
9	UPL-1359
10	XF-995B2
11	XF-386B1
12	XF-420A2
13	PL-1026
14	PL-1055
15	MPCS-483
16	MPCS-4048
17	MPCS-4049
18	PL-103ME
19	PL-1055
20	SPGL-1191E
21	SL-534ME
22	WL-5ME
23	MPCS-4183
24	SL-534ME
25	WL-5ME
26	MPCS-4191
27	SL-516ME

For full details, see page 23 in the Parts List.

Fig. 10B

PALLET-HANDLING PARTS: Pallet Loading (LH)

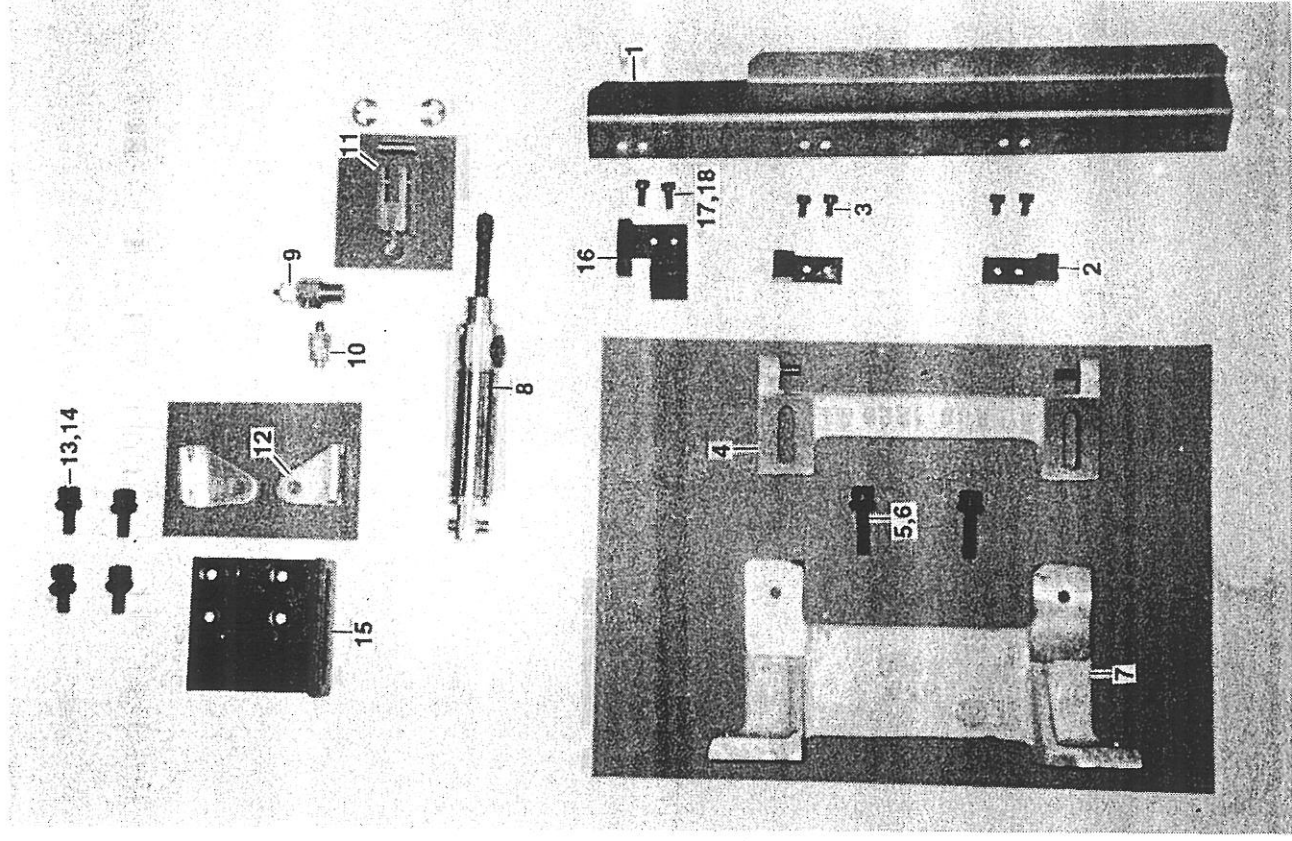


Fig. 10B **PALLET-HANDLING PARTS: Pallet Loading (LH)**

ITEM	PART No.
1	AJS-1231
2	AJS-74
3	MH-201B20
4	AJS-1229
5	MH-201D73
6	WL-5ME
7	MPCS-340
8	XF-413F2
9	XF-995A2
10	XF-386C1
11	XF-420A2
12	XF-491A1
13	MH-201B66
14	WL-5ME
15	AJS-1242B
16	AJS-167
17	SL-511ME
18	WL-3ME

For full details, see page 24 in the Parts List.

Fig. 10C

PALLET-HANDLING PARTS:
Pallet Stop and Identification

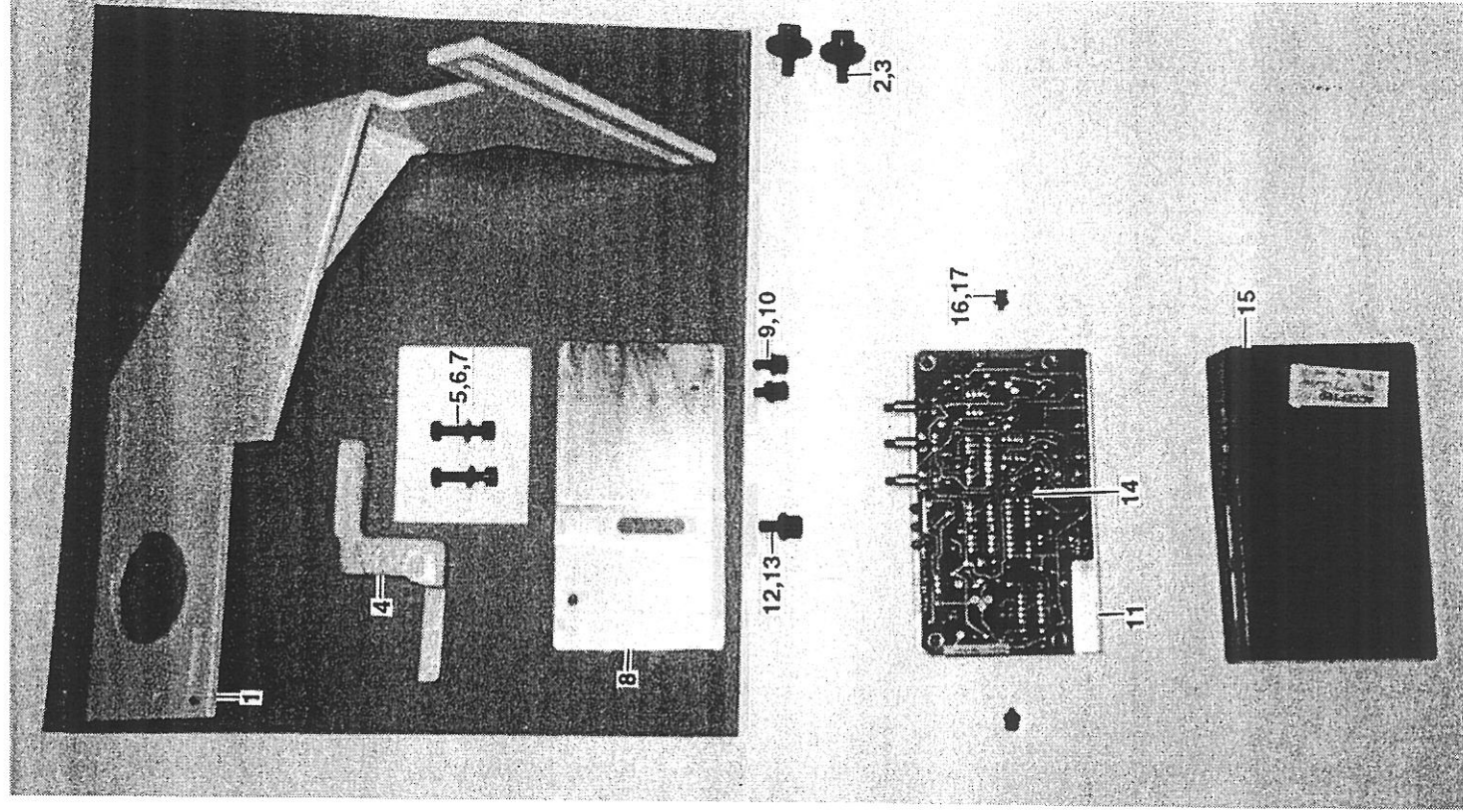


Fig. 10C

PALLET-HANDLING PARTS:
Pallet Stop and Identification

ITEM	PART No.
1	MPCS-470A
2	MH-201B69
3	WL-67ME
4	MPCS-472A
5	SL-526ME
6	NL-4ME
7	WL-4ME
8	MPCS-471
9	SL-524ME
10	WL-4ME
11	MPCS-481
12	SL-535ME
13	WL-5ME
14	AJS-860B88-2P1
15	MPCS-482
16	SL-500ME
17	WL-2ME

For full details, see page 25 in the Parts List.

Fig. 10D PALLET-HANDLING PARTS: Pallet Ejection (LH)

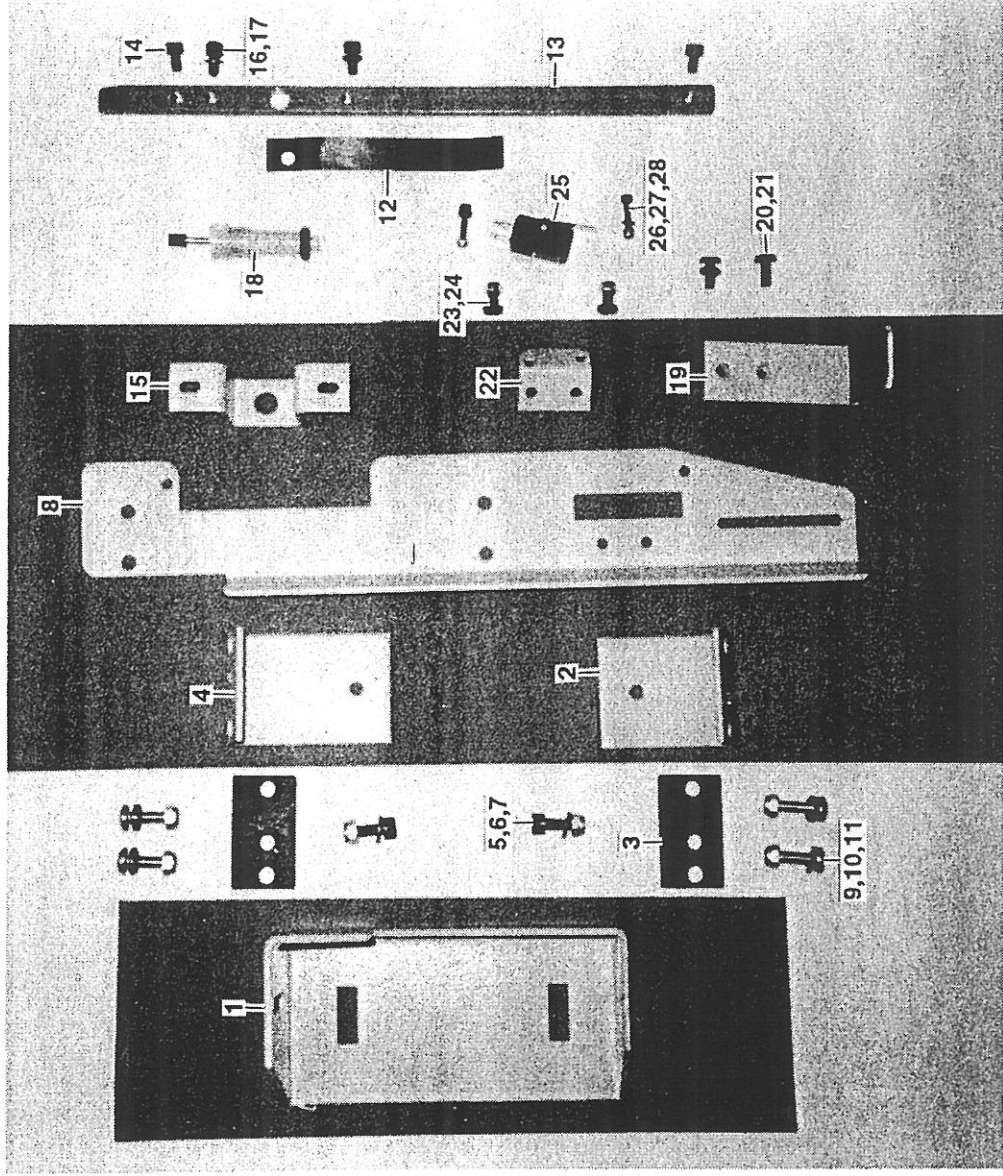


Fig. 10D **PALLET-HANDLING PARTS: PalletEjection (LH)**

ITEM	PART No.
1	MPCS-353
2	MPCS-354
3	AJS-1269
4	AJS-1224
5	SL-536ME
6	WL-5ME
7	NL-237ME
8	AJS-1244
9	SL-715ME
10	WL-5ME
11	NL-237ME
12	SPGL-1073ME
13	AJS-1247
14	SL-1179ME
15	AJS-1233
16	MH-201B41
17	MH-616A13
18	XF-470F4
19	AJS-1248
20	MH-300A201
21	WL-4ME
22	AJS-1226
23	SL-654ME
24	NL-236ME
25	XE-371E2
26	SL-504ME
27	WL-2ME
28	MH-603A10

For full details, see page 26 in the Parts List.

Fig. 10E

PALLET-HANDLING PARTS: Pallet Ejection(RH)

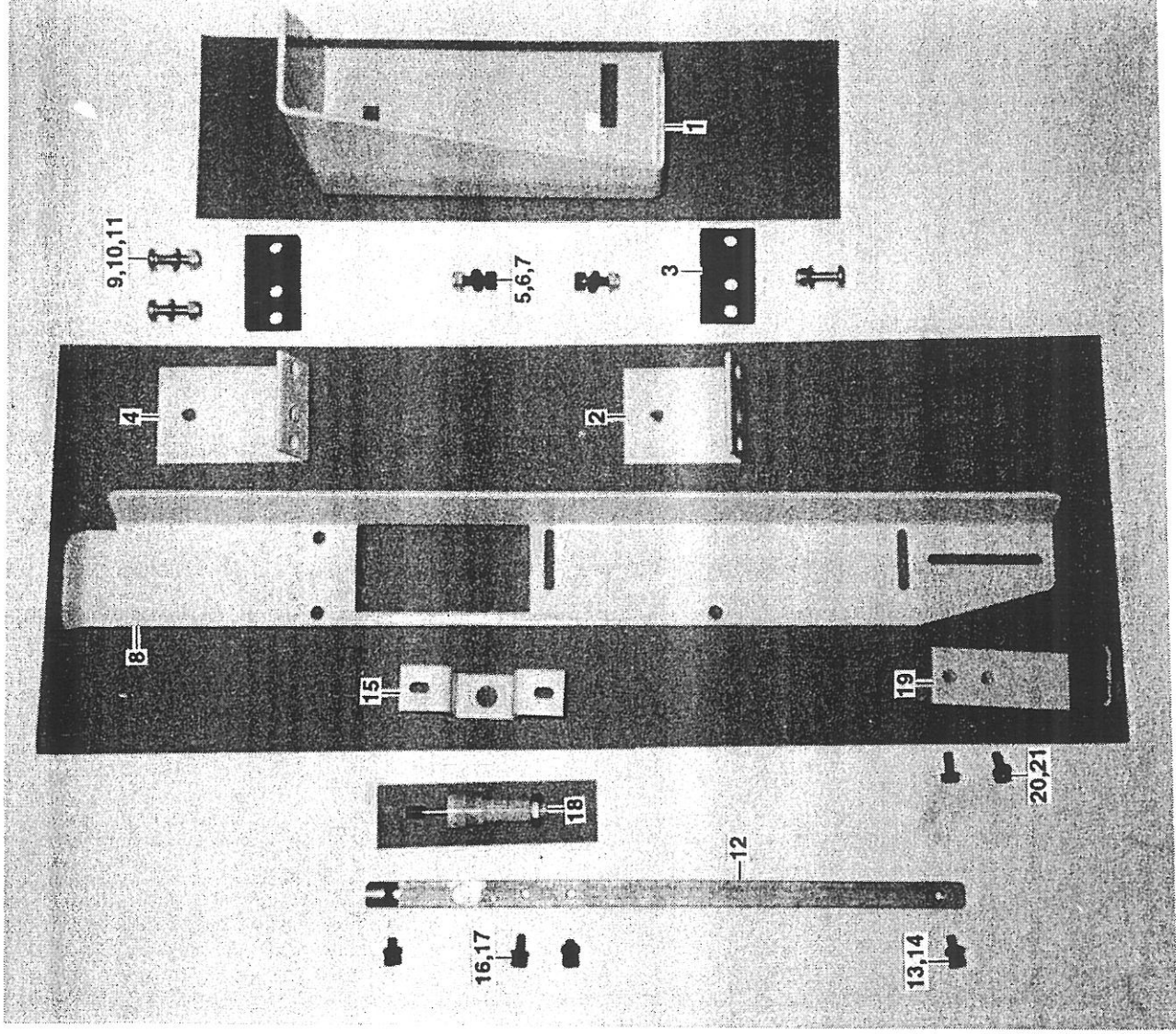


Fig. 10E **PALLET-HANDLING PARTS: Pallet Ejection (RH)**

ITEM	PART No.
1	MPCS-342A
2	MPCS-354
3	AJS-1269
4	AJS-1224
5	SL-536ME
6	WL-5ME
7	NL-237ME
8	AJS-1221
9	SL-715ME
10	WL-5ME
11	NL-237ME
12	AJS-1225
13	SL-1179ME
14	WL-4ME
15	AJS-1233
16	MH-201B41
17	WL-4ME
18	XF-470F4
19	AJS-1248
20	MH-300A201
21	WL-4ME

For full details, see page 27 in the Parts List.

Fig. 11 SEWING MACHINE DRIVE AND BELT GUARD

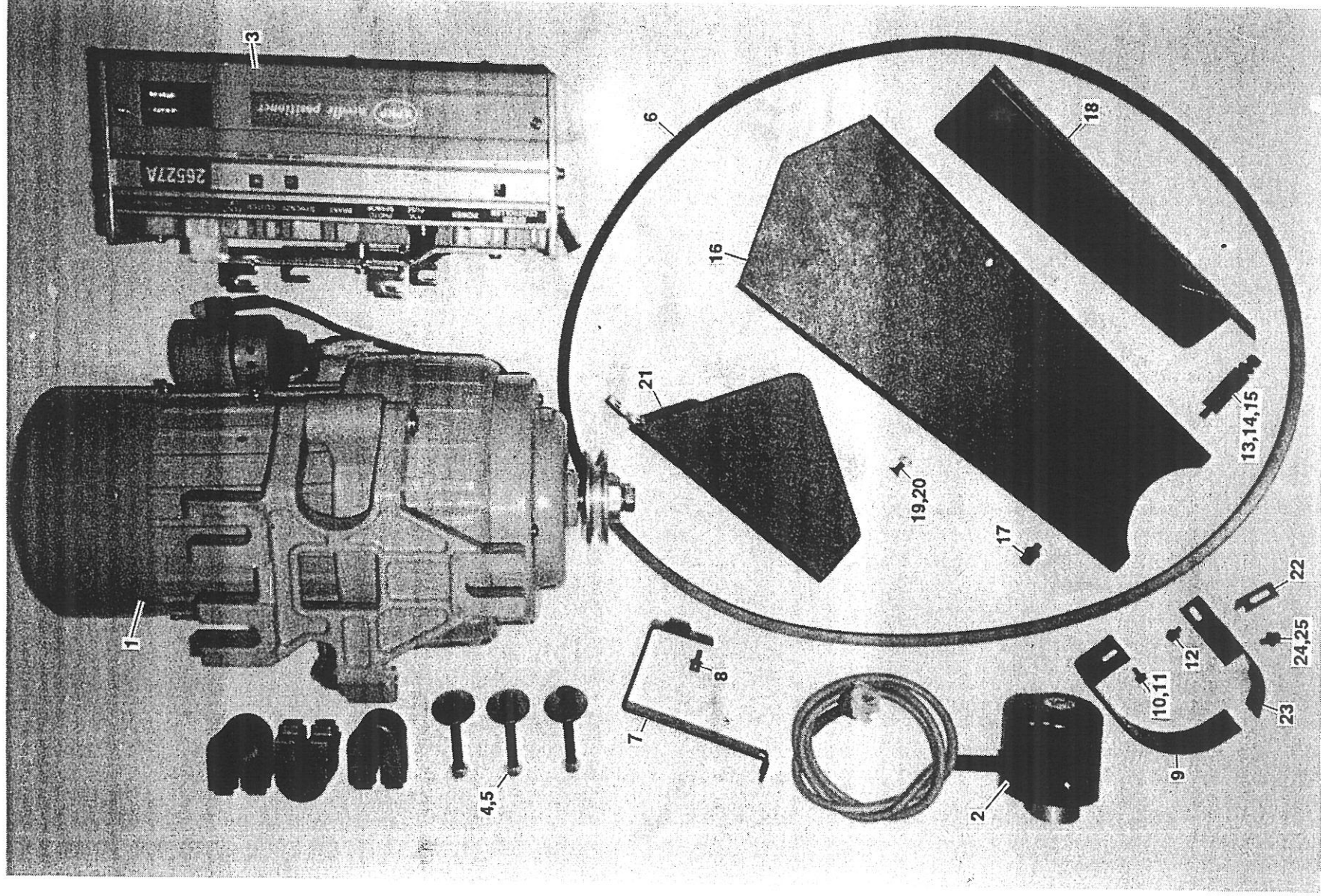


Fig. 11

SEWING MACHINE DRIVE AND BELT GUARD

ITEM	PART No.
1	MPCS-407
2	MPCS-418
3	ED-1124ME
4	SL-200ME
5	NL-234ME
6	MPCS-427
7	MPCS-387
8	MH-201B98
9	MPCS-413
10	SL-522ME
11	WL-4ME
12	SL-534ME
13	MPCS-414
14	MH-201B67
15	WL-5ME
16	MPCS-411
17	MH-201B66
18	MPCS-424
19	SL-32ME
20	NL-237ME
21	MPCS-412
22	AJS-432
23	AJS-386
24	XH-201C41
25	WL-1301E

For full details, see pages 28 and 29 in the Parts List.

Fig. 12A

'TO ORDER' PARTS: Cable Stitch Option

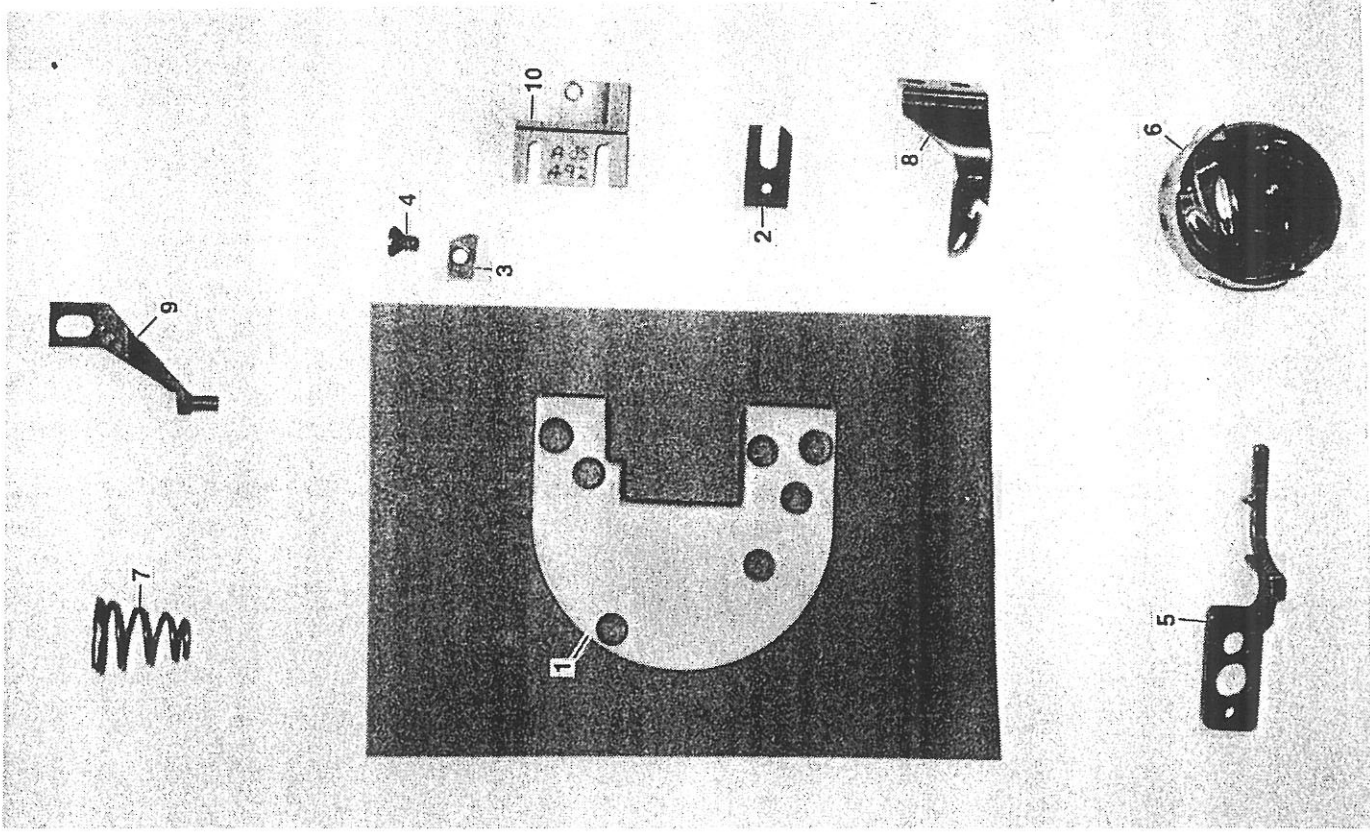


Fig. 12A

'TO ORDER' PARTS: Cable Stitch Option

ITEM	PART No.
1	AJS-1468
2	MPCS-561
3	MPCS-562
4	MH-302B180
5	ACS-647
6	MPCS-1192
7	ACS-578
8	MPCS-565
9	ACS-989
10	AJS-492

Cable Stitch Parts Complete: MPCS1-125

For full details, see page 30 in the Parts List.

Fig. 12B

'TO ORDER' PARTS: Service Kit

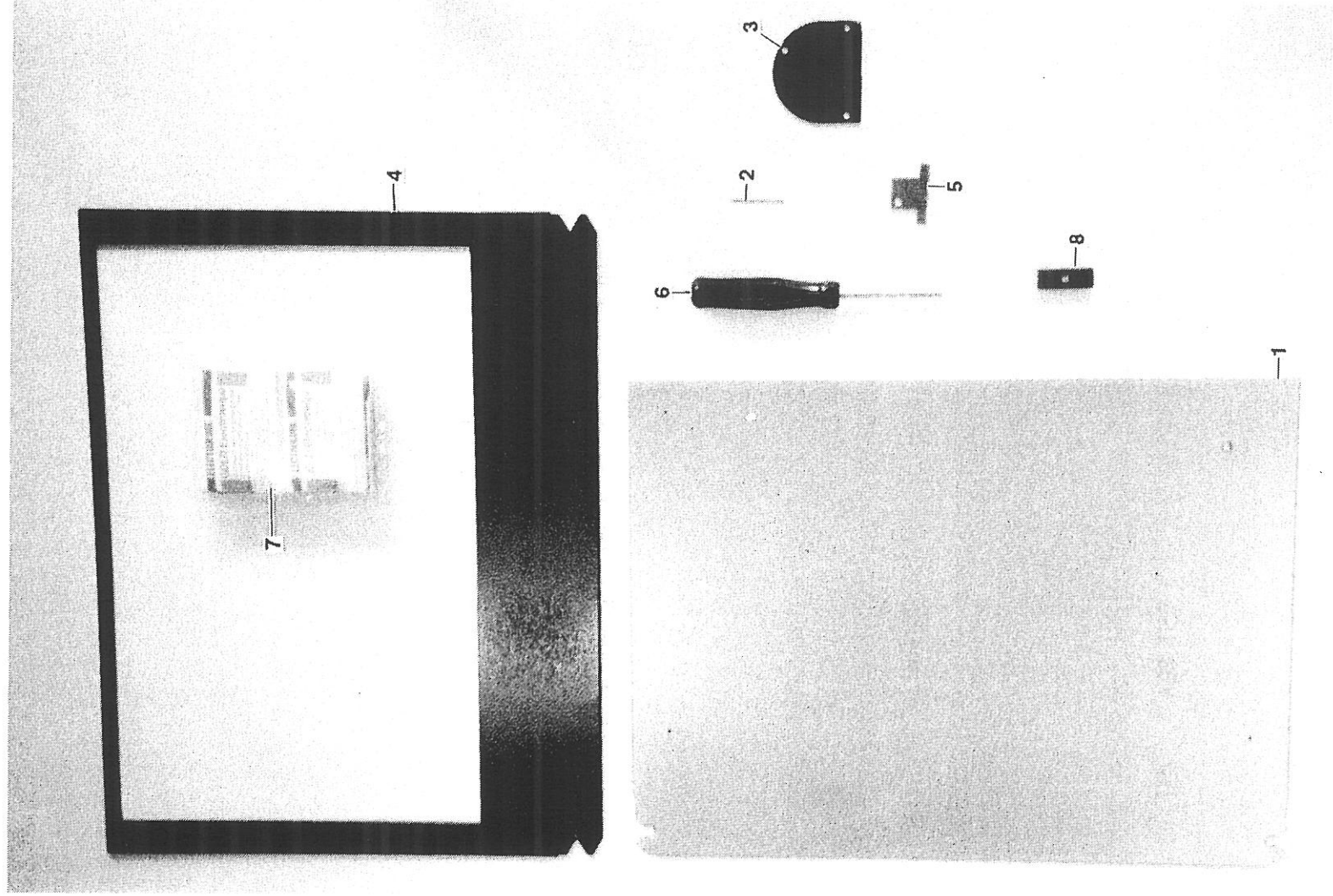


Fig. 12B

'TO ORDER' PARTS: Service Kit

ITEM	PART No.
1	AJS-1157
2	ACS-483
3	ACS-5070
4	MPCS-4145
5	ACS-467
6	ACS-473
7	XE-869D1
8	SSID-2817A-250

For full details, see page 32 in the Parts List.



Section 2: PARTS LIST

<u>Mechanism</u>	<u>Page</u>
MAIN FRAME AND COVER	1
ELECTRICAL PARTS	3
PNEUMATIC PARTS	10
MACHINE- BASE	12
X AND Y CARRIER	14
X AND Y DRIVE	17
PRESSER-FOOT OPERATING MECHANISM	18
PNEUMATIC CUTTER	20
HIGH-LIFT RECIPROCATING PRESSER-FOOT	21
MOVABLE THROAT PLATE	22
PALLET-HANDLING PARTS	23
SEWING MACHINE DRIVE AND BELT GUARD	28
'TO ORDER' PARTS	46

Note on constituent parts of fabrications and assemblies.

In the Parts List, an asterisk (*) after the details of a particular part signifies that the part belongs either to a welded fabrication or to an assembly that is considered to be a complete part in itself. It is not always possible to order these constituent parts separately.



FIG ITEM PART NO.	DESCRIPTION	QTY.
	COVER AND DOOR PARTS	
MPCS-620	COVER SET	1
MPCS-620-9	FRONT COVER RH	1 *
XH-924A5	FRONT COVER RH, FASTENER	6
XH-924K2	FASTENER RETAINER	6
MPCS-597	FRONT DOOR HINGE	1 *
MPCS-620-8	HINGE SPACER	1 *
MPCS-620-6	FRONT DOOR	1 *
ZH-2700	HINGE POP RIVET	5 *
ZH-1757A	WARNING PLATE	1
SL-512ME	FRONT DOOR MOUNTING SCREW	1
MH-603A12	MOUNTING SCREW NUT	3
XM-399A10	FRONT DOOR LATCH (TOP)	3
XM-399B10	FRONT DOOR LATCH (BOTTOM)	1
MPCS-620-7	FRONT COVER LH	1
XH-924A5	FRONT COVER LH FASTENER	1 *
XH-924K2	FASTENER RETAINER	8
MPCS-597	REAR DOOR RH, HINGE	8
MPCS-620-8	HINGE SPACER	1 *
ZH-2700	HINGE POP RIVET	1 *
MPCS-620-4	REAR DOOR LH	5 *
ZH-1757A	WARNING PLATE	1
ZH-38-2	EARTH PLATE	1
ZH-3163	EARTH PLATE POP RIVET	1
ZH-39-910	RATING PLATE	4
ZH-3163	RATING PLATE POP RIVET	1
SL-512ME	RATING PLATE POP RIVET	4 *
MH-603A12	REAR DOOR LH, MOUNTING SCREW	3
XM-399A10	MOUNTING SCREW NUT	3
XM-399B10	REAR DOOR LH, LATCH (TOP)	1
MPCS-597	REAR DOOR LH, LATCH (BOTTOM)	1
MPCS-620-8	REAR DOOR LH, HINGE	1 *
ZH-2700	HINGE SPACER	1 *
MPCS-620-3	HINGE POP RIVET	5
SL-512ME	REAR DOOR RH	1 *
MH-603A12	REAR DOOR RH, MOUNTING SCREW	3
MPCS-620-2	MOUNTING SCREW NUT	3
XH-924A5	REAR COVER	1
XH-924K2	REAR COVER FASTENER	8
MPCS-620-1	FASTENER RETAINER	8
ACS-645	FRAME END COVER LH	1
ZH-3165	FRAME END COVER RH, GRILL	1
WL-1301E	GRILL POP RIVET	2
XH-924A5	GRILL SPACER WASHER	6
XH-924K2	FRAME END COVER RH, FASTENER	8
AJS-1063	FASTENER RETAINER	8
MPCS-620-10	CABLE GUARD SEAL	2
MH-201B21	CABLE AND TUBE GUARD	1 *
MPCS-620-11	CABLE AND TUBE GUARD SCREW	8
SL-11D7	CABLE AND TUBE GUARD COVER	1 *
WL-1300E	CABLE AND TUBE GUARD COVER SCREW	4
AJS-1542	COVER SCREW WASHER	4
MPCS-620-13	DRIVE MOTOR BRACKET SEAL	1
MH-201B21	DRIVE MOTOR BRACKET SHIELD	1
AJS-1546	GUARD SCREW	2
MPCS-620-12	DRIVE BELT SHIELD SEAL	1
MH-201B21	DRIVE BELT SHIELD	1 *
	GUARD SCREW	3

MECHANISM

ELECTRICAL PARTS

FIG ITEM PART NO.

DESCRIPTION

QTY.

ELECTRICAL POWER COMPARTMENT

1A	1	MPCS-4001	ELECTRICAL POWER PANEL		1
1A	1	ED-1420ME	CIRCUIT BREAKER (S.P.16A)	CB3	1
1A	2	ED-799ME	CIRCUIT BREAKER (S.P.3A)	CB4	1
1A	3	ED-1412ME	CIRCUIT BREAKER (S.P.3A)	CB5	1
1A	4	ED-1244ME	FUSE HOLDER	FS6	1
1A	5	ED-1245ME	FUSE HOLDER END PLATE	FS6	1
		ED-15004	FUSE 3A		1
1A	6	ED-902ME	CONTACTOR (115V)	CON 1&6	2
		ED-1370ME-CPTE	ASSEMBLY, CURRENT LIMITING		1
		ED-868ME	MODULE		1
1A	7	RWVE-4R7/J2K5	RESISTOR		2
		MPCS-860C1-1	PC SIGNAL DISTRIBUTION		1
		XE-210M3	PC MOUNTING TRACK		1
		SL-398ME	PC MOUNTING TRACK SCREW		2
		WL-3ME	PC MOUNTING TRACK WASHER		2
1A	8	WL-19ME	PC MOUNTING TRACK LOCKWASHER		2
		XE-840B1	LINE FILTER (115V,5A)	FL1	1
		MH-350A183	LINE FILTER SCREW		2
		XE-940M83	LINE FILTER STANDOFF		2
1A	9	XE-641F6	POWER SUPPLY UNIT	PSU	1
		SL-398ME	POWER SUPPLY UNIT SCREW		4
		WL-19ME	POWER SUPPLY UNIT WASHER		4
1A	10	XE-882H1	BRIDGE RECTIFIER (100V, A)	REC1&2	2
		AZX-1470	THERMAL COMPOUND (AS REQUIRED)		
		SL-515ME	RECTIFIER MTG SCREW		2
		WL-19ME	RECTIFIER LOCKWASHER		2
1A	11	XE-833D832	ELECTROLYTIC CAPACITOR (8300MFD, 40V) C1		1
		XE-838A2	CAPACITOR CLAMP		1
		SL-398ME	CAPACITOR CLAMP FIXING SCREW		2
		WL-3ME	CAPACITOR CLAMP FIXING WASHER		2
		WL-19ME	CAPACITOR CLAMP FIXING LOCKWASHER		2
		SL-514ME	CAPACITOR CLAMP SCREW		1
		NL-2ME	CAPACITOR CLAMP NUT		1
		WL-2ME	CAPACITOR CLAMP WASHER		1
		ED-14480	BLEED RESISTOR (510,5.1/4W)	RL3	3
		ED-578ME	RESISTOR TERMINAL		6
1A	12	XE-833J343	ELECTROLYTIC CAPACITOR	C2&3	2
		XE-838A7	CAPACITOR CLAMP		2
		SL-398ME	CAPACITOR CLAMP FIXING SCREW		2
		WL-3ME	CAPACITOR CLAMP FIXING WASHER		6
		WL-19ME	CAPACITOR CLAMP FIXING LOCKWASHER		6
		SL-514ME	CAPACITOR CLAMP SCREW		6
		NL-3ME	CAPACITOR CLAMP NUT		2
		WL-3ME	CAPACITOR CLAMP WASHER		2
		ED-9292E	TERMINAL BLOCK END STOP		4
1A	13	ED-1246ME	CIRCUIT BREAKER(DP,20A)	CB1	1
1A	14	ED-1377ME	CIRCUIT BREAKER(DP,10A)	CB2	1
1A	15	ED-1244ME	FUSEHOLDER	FS3,4,5	3
1A	16	ED-1302ME	FUSE LINK(5A,1.1/4")	FS3,4,5	3
1A	17	ED-9072E	RELAY BASE(8 PIN)	RL2,3,5	3
1A	18	ED-14834	RELAY(24VDC,DPDT)	RL2,3,5	3
1A	19	ED-9287E	RELAY BASE(11 PIN)	RL4	1
1A	20	XE-602B11	RELAY(24VDC,3PDT)	RL4	1
		SCDD-1N4004	DIODE	D1-4	4
		ZZJM255M	DIODE SLEEVE (8")	D1-4	4
		XE-111B6-1	DIODE HEAT SHRINKABLE SLEEVE	D1-4	4
		ED-684ME	RING TERMINAL	D1-4	8

FIG ITEM PART NO.

1A 21 ED-9293E
 1A 22 ED-9291E
 1A 23 ED-1061ME
 1A 24 ED-423ME
 1A 25 ED-424ME
 1A 26 ED-1244ME
 1A 27 ED-1245ME
 1A 28 XE-409C14
 MH-201B66
 WL-5ME
 ED-915ME
 ED-1609ME
 MPCS-4011
 MPCS-4011-1
 NL-76ME
 SL-535ME
 ED-1316ME
 ED-9292E
 ED-9291E
 ED-424ME
 ED-440ME
 ED-441ME
 EWS-237

DESCRIPTION

TERMINAL END SECTION
 TERMINAL BLOCK
 TERMINAL BLOCK MARKER STRIP
 TERMINAL BLOCK LINK (2 WAY)
 TERMINAL BLOCK (EARTH)
 FUSE HOLDER
 FUSE HOLDER END PLATE
 FUSE (10A)
 PANEL MOUNTING SCREW
 PANEL MOUNTING SCREW WASHER
 MAINS ISOLATOR
 MAINS ISOLATOR FINGER GUARD
 MAINS ISOLATOR BRACKET
 MAINS ISOLATOR BRACKET RAIL
 MAINS ISOLATOR BRACKET NUTSERT
 MAINS ISOLATOR BRACKET SCREW
 CIRCUIT BREAKER (16A)
 TERMINAL BLOCK END STOP
 TERMINAL BLOCK
 EARTH BLOCK
 MAINS CABLE
 MAINS CABLE BINDING SCREW
 WIRING SET

TB2
 TB2
 TB2
 TB2
 TB2
 FS8,9
 FS8,9
 FS8,9

QTY.

4
 40
 1
 7
 7
 2
 2
 2
 4
 4
 1
 1
 1
 1
 2
 2
 1
 3
 4
 4
 2
 1
 2
 1

*
*

CB6

OPERATOR CONTROL PANEL COMPARTMENT

MPCS-348	OPERATOR CONTROL ENCLOSURE ADAPTOR	1	
SL-193ME	ADAPTOR SCREW	2	
NL-234ME	ADAPTOR SCREW NUT	2	
WL-6ME	ADAPTOR SCREW WASHER	2	
MPCS-495	OPERATOR CONTROL ENCLOSURE	1	
MH-400E94	ADAPTOR LOCATING SCREW	2	
MH-201B66	ENCLOSURE SCREW	3	
AJS-1453	WORK TRAY	1	
ZH-3166	WORK TRAY POP RIVET	4	
MPCS-491	CONTROL PANEL PIVOT BRACKET	1	
SL-796ME	PIVOT BRACKET SCREW	2	
WL-333ME	PIVOT BRACKET SCREW WASHER	2	
SL-524ME	LOCK SCREW	1	
WL-4ME	LOCK SCREW WASHER	1	
MPCS-2E	CONTROL PANEL PC BOARD KEY CAP SET	1	
MPCS-440	KEYCAP "START"	1	*
MPCS-445	KEYCAP "STOP"	1	*
MPCS-439	KEYCAP "EXIT"	1	*
MPCS-436	KEYCAP "RESET"	1	*
MPCS-444	KEYCAP "FOOT DOWN"	1	*
MPCS-433	KEYCAP "FWD"	1	*
MPCS-437	KEYCAP "NEXT"	1	*
MPCS-441	KEYCAP "CLAMP"	1	*
MPCS-434	KEYCAP "REV"	1	*
MPCS-438	KEYCAP "DO"	1	*
MPCS-442	KEYCAP "BOBN"	1	*
MPCS-443	KEYCAP "FAST"	1	*
MPCS-432	KEYCAP "UP"	1	*
MPCS-431	KEYCAP "DOWN"	1	*
MPCS-435	KEYCAP "CAL"	1	*
MPCS-860B81-2P	PC BOARD (CONTROL PANEL)	1	
MH-300B181	KEYBOARD PANEL SCREW	3	
AJS-860B82-2	PC BOARD (DISPLAY)	1	
XH-350A63	PC BOARD SCREW	3	
MPCS-1047	OPERATOR CONTROL PANEL	1	
MPCS-397	PANEL STANDOFF	5	
MPCS-398	SHIELD MOUNTING STUD	2	
MPCS-1048	CONTROL PANEL LEGEND PLATE	1	
MPCS-395	READ OUT SHIELD	1	
WL-3ME	READ OUT SHIELD WASHER	1	
MH-603A12	READ OUT SHIELD NUT	2	
MPCS-4144	PANEL SPACER	2	
MH-300B191	PANEL SCREW	2	
MH-201B22	KEYBOARD PANEL SCREW	1	
MH-200B163	KEYBOARD PANEL SCREW	1	
XM-932A2	POTENTIOMETER KNOB	1	
XM-933A1	KNOB REDUCER	1	
XE-384C4	RED CAP	1	
XE-386B5	PUSHBUTTON SWITCH (EMERGENCY STOP/OFF S2)	1	
XE-111A5-X25	HEAT SHRINKABLE SLEEVE	1	
AFS-2167	GREEN CAP (SPLIT LENS) (ENGRAVED)	1	
XE-386B2	PUSHBUTTON SWITCH (POWER/READY S1)	1	
ED-15341	SINGLE CONTACT MIDGET FLANGE BASE	1	
XE-386C2	SWITCH BARRIER (END)	1	
XE-111A5-X25	HEAT SHRINKABLE SLEEVE	7	
SL-646ME	CONTROL PANEL MOUNTING SCREW	6	
MH-611A12	CONTROL PANEL MOUNTING SCREW WASHER	6	

FIG ITEM PART NO.	DESCRIPTION	QTY.
	ELECTRONIC CONTROLS COMPARTMENT	
MPCS-4002	PROCESSOR MOUNTING PLATE	1
ED-1260ME	PC BOARD STANDOFF	10
XE-189C3	FLAT CABLE CLAMP	1
XE-189D3	FLAT CABLE CLAMP PLATE	1
MH-300B180	FLAT CABLE CLAMP SCREW	2
ED-13580	FLAT CABLE CLAMP TIE	1
XE-189C2	FLAT CABLE CLAMP	2
XE-189D2	FLAT CABLE CLAMP PLATE	2
MH-300B180	FLAT CABLE CLAMP SCREW	4
ED-13580	FLAT CABLE CLAMP TIE	2
ED-13581	FLAT CABLE CLAMP	4
MH-300B180	FLAT CABLE CLAMP	4
MPCS-860B86-1P11	DIGITAL CONTROLLER PC BOARD	1
XH-350A63	BOARD SCREW	9
MH-201B66	PANEL MOUNTING SCREW	4
WL-5ME	PANEL MOUNTING SCREW WASHER	4
MPCS-860B84-1	PROM CARD INTERFACE PC BOARD	1
XH-300C62	BRACKET SCREW	1
MPCS-860B99-1	INPUT ISOLATOR PC BOARD	1
XH-201C22	PC BOARD SCREW	4
MPCS-1052	OUTLET BOX	1
MH-201B65	BOX MOUNTING SCREW	2
ED-205ME	MAINS GRIP GLAND	1
ED-206ME	MAINS GRIP GLAND NUT	1
ED-9813E	DUPLEX OUTLET	1
MPCS-1053	BOX COVER	1
SL-9D11	BOX COVER SCREW	1
XE-869C6	ELECTROSTATIC SENSITIVE DEVICES DECAL	1
XE-315E1	CAUTION "TURN OFF POWER" DECAL	1

FIG ITEM PART NO.	DESCRIPTION	QTY.
	PROM BOARD COMPARTMENT	
MPCS-364	CARD GUIDE BRACKET (RIGHT)	1
ED-9818E	PC CARD GUIDE	1
SL-13D15	BRACKET SCREW	2
WL-1301E	BRACKET SCREW WASHER	2
XH-604A5	BRACKET SCREW NUT	2
MPCS-365	CARD GUIDE BRACKET (LEFT)	1
ED-9818E	PC CARD GUIDE	1
SL-13D15	BRACKET SCREW	2
WL-1301E	BRACKET SCREW WASHER	2
XH-604A5	BRACKET SCREW NUT	2
XE-179A4	RUBBER GROMMET	1
MPCS-860B85-1	PROM INTERFACE PC BOARD	1
SL-7D15	PC BOARD SCREW	1
WL-1299E	PC BOARD SCREW WASHER	4
NL-1341	PC BOARD SCREW NUT	4
AFS-2247	CAM KEY COLLAR	4
SL-3N5	COLLAR SET SCREW	1
AFS-2246	CAM KEY LEVER	1
PL-6006	LEVER PIN	1
AFS-2248	RELEASE SPRING SPACER	2
SPGL-3489	RELEASE CAM SPRING	1
WL-1300E	SPRING WASHER	1
AFS-2044	PROM RELEASE ROD	1
SL-7D15	PROM RELEASE ROD SCREW	1
WL-2063	LOCKWASHER	1
AFS-2043	PROM CARD RELEASE KNOB	1
PL-5877	KNOB PIN (SPRING)	1
AFS-2047	PROM CARD ACCESS COVER	1
XM-412A1	SPRING HINGE	1
ZH-3166	POP RIVET	2
ZH-3167	ACCESS COVER HANDLE	8
WL-1995	HANDLE LOCKWASHER	1
SL-5324E	HANDLE SCREW	1
MPCS-860B83-4	PROM PC BOARD (4 PROM CAPACITY-4 SOCKET)	1
		2

FIG ITEM PART NO.

DESCRIPTION

QTY.

TRANSFORMER COMPARTMENT

ED-947ME	MAIN CONTROL TRANSFORMER	(T1)	1
ED-949ME	STITCHER DRIVE TRANSFORMER		1
WL-5ME	TRANSFORMER WASHER		6
MH-201B66	TRANSFORMER SCREW	(TB1)	6
ED-6755E	TERMINAL STRIP (16)		1
MPCS-3167	TERMINAL STRIP MARKER		1
MPCS-3168	TERMINAL STRIP MARKER		1
MH-201B23	TERMINAL STRIP MARKER SCREW		2
WL-3ME	TERMINAL STRIP MARKER SCREW		2
EWS-194B	WIRING SET		1

SERVO DRIVE COMPARTMENT

FIG	ITEM	PART NO.	DESCRIPTION	QTY.
1B	1	MPCS-594	FAN PANEL	1
1B	2	SL-537ME	FILTER RETAINER SCREW	2
1B	2	NL-237ME	FILTER RETAINER SCREW NUT	2
1B	3	MH-300A229	FAN PANEL SCREW	4
1B	4	WL-5ME	FAN PANEL SCREW WASHER	12
1B	4	XE-981B3	MAIN ELECTRICAL FAN (B5)	1
1B	5	XE-981M10	FAN GUARD	1
1B	6	SL-18ME	FAN MOUNTING SCREW	2
1B	7	MH-603A12	FAN SCREW NUT	2
1B	8	ACS-435	FILTER	1
1B	9	AJS-1553	FILTER BRACKET	2
1B	10	SL-666ME	FILTER BRACKET SCREW	2
1B	11	MH-611A14	FILTER BRACKET SCREW LOCKWASHER	2
1B	12	MPCS-368	SERVO DRIVER HEAT SINK COMPLETE	1
		AJS-426	HEAT SINK	2
		MCPS-1044	TUFNOL SPACER	4
		SL-11D11	SPACER MOUNTING SCREW	8
		WL-1920	LOCKWASHER	8
		XE-860B52-2	SERVO POWER PC BOARD	2
		XE-829E2	TRANSISTOR MOUNTING PAD (Q1-Q6)	12
		XE-823B3	TRANSISTOR (Q1-Q3)	6
		XE-823A7	TRANSISTOR (Q4-Q6)	6
		SL-9D19	TRANSISTOR_MOUNTING SCREW	24
		WL-1548E	TRANSISTOR SCREW LOCKWASHER	24
		MH-201B66	HEAT SINK SCREW	4
		WL-5ME	HEAT SINK SCREW WASHER	4
		XE-940C34	SPACER	8
		SL-9D11	SPACER SCREW	16
		MPCS-423	HEAT SINK AIR BAFFLE	2
		SL-523ME	HEAT SINK MOUNTING SCREW	4
		WL-4ME	HEAT SINK SCREW WASHER	4
		MPCS-422	HEAT SINK TIE PLATE	1
		SL-525ME	HEAT SINK TIE PLATE SCREW	4
		WL-4ME	TIE PLATE SCREW WASHER	4
		NL-236ME	TIE PLATE SCREW WASHER NUT	4

***** PNEUMATIC PARTS *****

MECHANISM *****

***** DESCRIPTION *****

FIG ITEM PART NO. VALVE COMPARTMENT QTY.

FIG ITEM	PART NO.	DESCRIPTION	VALVE COMPARTMENT	QTY.
2A	1	MPCS-6E	PNEUMATIC ENCLOSURE	1
		XE-180A3-3X12	NYLON GROMMET STOCK	1
		NL-237ME	ENCLOSURE SCREW NUT	4
		WL-5ME	ENCLOSURE SCREW WASHER	4
2A	1	MPCS-860B87-1	PC SOLENOID DISTRIBUTION BOARD	1
		MPCS-1095	CABLE RETAINER	1
		SL-3D11	RETAINER BINDING SCREW	2
		WL-1ME	BINDING SCREW WASHER	2
		XE-210M3	BOARD HOLDER	1
		MH-300B180	BOARD HOLDER SCREW	2
		WL-3ME	BOARD HOLDER SCREW WASHER	2
2A	2	XF-791B502	SEWING MACHINE PRESSER FOOT VALVE	1
		SL-517ME	PRESSER FOOT VALVE SCREW	2
		ZH-2018	"EXHAUST" PORT MUFFLER	1
		PTL-369	POLY-FLO "IN" PORT TEE	1
		UPL-204	PIPE ELBOW "A" "B" AND "2" PORTS	3
		XF-386B3	STRAIGHT FITTING	2
2A	3	XF-789B501	PALLET CLAMP VALVE (KEY NO.2)	1
		SL-517ME	VALVE SCREW	2
		ZH-2018	MUFFLER "3" PORT	1
		UMA-40	POLY-FLO MALE SIDE TEE "1" PORT	1
		XF-375A1	STRAIGHT BARBED FITTING	1
		FF-10536	AIR VALVES AND TUBING DIAGRAM	1
2A	4	XF-789B501	NEEDLE COOLING VALVE (KEY NO.4)	1
		SL-517ME	NEEDLE COOLING VALVE SCREW	2
		ADS-187	POLY-FLO ELBOW	1
		UPL-204	PIPE ELBOW	1
2A	5	XF-995A2	AIR CONTROL VALVE (KEY NO.53)	1
		XF-342B1	TUBE FITTING	1
		NOTE	PNEUMATIC CUTTER VALVE	1
2A	6	XF-792A611	THREAD CUT VALVE (KEY NO.11)	1
		ADS-187	ELBOW	1
		ZH-2018	MUFFLER	1
		XF-386B3	STRAIGHT FITTING	2
		SL-519ME	VALVE SCREW	2
		WL-3ME	VALVE SCREW WASHER	2
		NOTE	PALLET TRANSFER SOLENIOD VALVE	1
2A	7	XF-789B501	UNLOADING VALVE (KEY NO.3)	1
		UMA-40	TEE	1
		ZH-2018	MUFFLER	1
		UPL-204	ELBOW	1
		XF-375A1	STRAIGHT FITTING	1
		SL-517ME	VALVE SCREW	2
2A	8	XF-789B501	LEFT SHELF VALVE (KEY NO.7)	1
		UMA-40	TEE	1
		ZH-2018	MUFFLER	1
		UPL-204	ELBOW	1
		ADS-187	ELBOW	1
		SL-517ME	VALVE SCREW	2
2A	9	XF-789B501	RIGHT SHELF VALVE (KEY NO.6)	1
		UMA-40	TEE	1
		ZH-2018	MUFFLER	1
		UPL-204	ELBOW	1
		XF-995B2	RAISE RH LOAD SHELF FLOW CONTROL VALVE	1
		XF-386B1	STRAIGHT FITTING	1
		SL-517ME	VALVE SCREW	2

FIG ITEM PART NO.

DESCRIPTION

QTY.

MAIN AIR SUPPLY

2B	1	AFS-545	AIR SUPPLY BRACKET	1
		SL-174ME	AIR SUPPLY BRACKET SCREW	
2B	2	AJS-1538	"U" BOLT HANGER	2
2B	3	WL-1301E	"U" BOLT WASHER	4
2B	4	XH-604A5	"U" BOLT NUT	4
2B	5	UPL-1339	FEMALE PIPE TEE	1
2B	6	UPL-1338	HEX NIPPLE	2
2B	7	XF-704B4	REGULATOR FILTER	1
2B	8	UPL-261A	PRESSURE GAUGE	1
2B	9	UPL-1338	HEX NIPPLE	1
2B	10	PCI-323	ON-OFF VALVE, KEY NO.25	1
2B	11	UPL-1342	STREET ELBOW	1
		APT-34E	HOSE ADAPTOR	1
		UEM-211E	HOSE CLIP	1
2B	12	XF-835D1	LUBRICATOR	1
2B	13	PTL-373	POLY-FLO ELBOW	1
2B	14	UPL-1353	PIPE TEE	1
2B	15	XF-115C1	SELF RECOILING AIR HOSE	1
2B	16	MPCS-4068	AIR NOZZLE	1
2B	17	UPL-1341	POLY-FLO STRAIGHT FITTING	1

MECHANISM

MACHINE BASE PARTS

FIG ITEM PART NO.

DESCRIPTION

QTY.

3A	1	MPCS-426B	MACHINE BASE	1
		XE-190D14	"P" CLIP	1
		MH-201B42	CLIP SCREW	1
		MPCS-1433	MACHINE BASE COVER PLATE	1
		MH-201B41	MACHINE BASE COVER PLATE SCREW	4
		PL-461E	"X" RAIL DOWEL	5
		PL-462E	PIVOT BRACKET DOWEL	2
3A	2	PL-458E	"X" DRIVE MOTOR DOWEL	4
3A	3	MPCS-488A	"X" AXIS RAIL SUPPORT SPACER ASS'D	1
		PL-461E	SPACER PIN	1
		MM-907A41	VIBRATION ISOLATION BASE MOUNT	1
		WL-6ME	MOUNT WASHER	4
		NL-234ME	MOUNT NUT	4
3A	4	MPCS-485	"X" AXIS RAIL (FRONT)	1
3A	5	MPCS-486	"X" AXIS RAIL (REAR)	1
3A	6	MH-201B41	RAIL SCREW	8
3A	7	MH-201D53	RAIL SCREW	2
3A	8	AJS-102A	SERVO MOTOR BRACKET	2
3A	9	SL-525ME	SERVO MOTOR BRACKET SCREW	2
3A	10	MPCS-5E	SERVO MOTOR BRACKET SHIM	8
3A	11	AJS-1213	SEWING HEAD STOP BRACKET	2
3A	12	MPCS-474	SEWING HEAD STOP EXTENSION	1
3A	13	MH-201B102	SEWING HEAD STOP MOUNTING SCREW	1
3A	14	XM-899A2	BUMPER	4
3A	15	SL-1140ME	BUMPER SCREW	1
3A	16	WL-5ME	BUMPER SCREW WASHER	1
3B	1	AJS-107	"X" LIMIT STOP BRACKET	2
3B	2	MH-201B42	"X" LIMIT STOP BRACKET SCREW	4
3B	3	WL-4ME	BRACKET SCREW WASHER	4
3B	4	AJS-106	"X" LIMIT STOP	2
3B	5	SL-1179ME	"X" LIMIT STOP SCREW	4
3B	6	XE-347A1	"X" LIMIT SWITCH (CABLE MPCS-535A)	2
3B	7	ED-17576	SWITCH SHIELD	2
3B	8	XH-300A6	SWITCH SCREW	4
3B	9	WL-1947T	SWITCH SCREW LOCKWASHER	4
3B	10	NL-3ME	SWITCH SCREW NUT	4
3B	11	AJS-108	"X" LIMIT SWITCH BRACKET	2
3B	12	MH-201B21	"X" LIMIT SWITCH BRACKET SCREW	4
3B	13	WL-3ME	BRACKET SCREW WASHER	4

*

FIG ITEM PART NO.

DESCRIPTION

QTY.

SEWING HEAD MOUNTING PARTS

MPCS-458	SEWING HEAD ADAPTOR ASS'D	1	*
PL-458E	SEWING HEAD LOCATING PIN	2	
AJS-307	HINGE PIVOT BRACKET	1	
PL-4025	HINGE PIVOT PIN	2	
SL-70ME	PIN BINDING SCREW	2	
SL-196ME	HEAD LEVELLING SCREW (PANEL)	1	
SL-178ME	HEAD BINDING SCREW (FRONT)	1	
SL-194ME	HEAD BINDING SCREW (REAR)	3	
SL-193ME	HEAD BINDING SCREW (REAR INSIDE)	2	
SL-196ME	HEAD BINDING SCREW (FRONT)	2	
AJS-420	SEWING HEAD LOCKING SCREW	1	
AJS-475	HOLD-DOWN SCREW	1	
SPGL-608	SCREW RISER SPRING	1	
WL-1304E	WASHER	1	
TCF-496	SCREW RETAINING RING (E-RING)	1	
MH-201B100	PIVOT BRACKET MOUNTING SCREW	4	

 MECHANISM "X" AND "Y" CARRIER PARTS

 FIG ITEM PART NO. DESCRIPTION QTY.

4A	1	AJS-109	"X" AND "Y" CARRIER	1
4A	2	AJS-110	"X" AND "Y" CARRIER	1
4A	3	AJS-111	"Y" AXIS GUIDE ROD	7
4A	4	SL-528ME	GUIDE ROD INSERT NUT	7
4A	5	WL-4ME	GUIDE ROD SCREW	7
4A	6	XM-542M1	GUIDE ROD SCREW WASHER	4
4A	7	NL-16U1	FIXED CAM FOLLOWER	4
4A	8	WL-1303E	FIXED CAM FOLLOWER NUT	4
4A	9	XM-542L1	FIXED CAM FOLLOWER WASHER	4
4A	10	XH-60484	ECCENTRIC CAM FOLLOWER	6
4A	11	WL-1301E	ECCENTRIC CAM FOLLOWER NUT	6
4A	12	AJS-112	ECCENTRIC CAM FOLLOWER WASHER	6
4A	13	AJS-113	CAM FOLLOWER GUARD	4
4A	14	SL-511ME	FOLLOWER WIPER FELT	8
4A	15	WL-3ME	CAM FOLLOWER GUARD SCREW	8
4B	1	AJS-114	CAM FOLLOWER GUARD SCREW WASHER	8
4B	2	SL-511ME	"Y" LIMIT STOP BRACKET	2
4B	3	WL-3ME	"Y" LIMIT STOP BRACKET SCREW	4
4B	4	AJS-115	BRACKET SCREW WASHER	4
4B	5	SL-511ME	"Y" LIMIT STOP	2
4B	6	AJS-116	"Y" LIMIT STOP SCREW	4
		WL-2ME	STOP SWITCH BRACKET (FRONT)	1
4B	7	AJS-93	STOP SWITCH BRACKET SCREW	2
		WL-502ME	STOP SWITCH BRACKET SCREW WASHER	2
		WL-2ME	STOP SWITCH BRACKET (REAR)	1
4B	8	XE-347A1	STOP SWITCH BRACKET SCREW	2
4B	9	ED-17576	STOP SWITCH BRACKET SCREW WASHER	2
4B	10	XH-300A6	"Y" LIMIT SWITCH (CABLE MPC5-535A, W24)	2
4B	11	WL-1947	SWITCH SHIELD	2
4A	16	AJS-1549	SWITCH SCREW	4
4A	17	AJS-379-1	SWITCH SCREW LOCKWASHER	4
4A	18	AJS-380	TUBE RETAINER BRACKET	1
4A	19	SL-525ME	BRACKET BUSH	1
4A	20	MPCS-58A	BRACKET RETAINER	1
4A	21	SL-527ME	BRACKET RETAINER SCREW	1
4A	22	AJS-1548A	TUBE GUIDE ROD	2
4A	23	SL-523ME	ROD CLAMP SCREW	2
4A	24	WL-4ME	TUBE GUIDE ROD SUPPORT	1
		NOTE	TUBE GUIDE ROD SUPPORT SCREW	1
		NOTE CONT.	TUBE GUIDE ROD SUPPORT SCREW WASHER	1
		NOTE CONT.	PARTS DISPLACED AS OF FEB`94	
		NOTE CONT.	AJS-110 DISPLACED BY AJS-110A.	
		NOTE CONT.	AJS-1549, AJS-379-1, AJS-380 AND SL-525ME	
		NOTE CONT.	DISPLACED BY AJS-1549A AND SL-527ME.	

"Y" HOUSING AND PALLET HOLDER

4A 25	AJS-117	"Y" HOUSING ASS'D	1	*
	PL-929E	HOUSING DOWEL	2	
4A 26	AFS-385A	BUSHING SLEEVE (FRONT)	1	
4A 27	ACS-132	BEARING SEAL	2	
4A 28	XM-651B3	BEARING	1	
	ACS-132	BEARING SEAL	2	
4A 29	PL-5959	ANTI-ROTATION PIN	2	
4A 30	SL-60ME	SLEEVE ADJUSTING SCREW	2	
4A 31	AJS-119	END CAP (FRONT) ASS'D	4	
	XH-705C16	DOWEL PIN	1	*
4A 32	AJS-120	TUBE ADAPTOR	1	
4A 33	ZH-2109	ADAPTOR TUBE O RING SEAL	1	
4A 34	SL-513ME	END CAP SCREW	4	
4A 35	AJS-121	PISTON	1	
4A 36	AJS-122	PISTON STEM	1	
4A 37	MPCS-4133	PISTON QUAD RING SEAL	1	
4A 38	AJS-123	PALLET CLAMP LEVER ASS'D	1	*
	XH-707A16	SPRING PIN	1	
4A 39	AJS-1159	PALLET CLAMP	1	
4A 40	MH-201B25	PALLET CLAMP SCREW	1	
4A 41	WL-3ME	PALLET CLAMP SCREW WASHER	1	
4A 42	AJS-129	PALLET CLAMP SCREW	1	
	SL-54ME	CLAMP LEVER FULCRUM PIN	1	
4A 43	PL-3390	CLAMP LEVER FULCRUM PIN SCREW	1	
4A 44	PL-1055	PISTON STEM FULCRUM PIN	1	
4A 45	AJS-124	COTTER PIN	1	
4A 46	SL-65ME	PISTON STOP BRACKET	1	
4A 47	NL-3ME	PISTON STROKE ADJUSTING SCREW	1	
4A 48	AJS-127	ADJUSTING SCREW NUT	1	
4A 49	SL-512ME	SPRING BRACKET	2	
4A 50	SPGL-416	SPRING BRACKET SCREW	2	
	AFS-385A	CLAMP OPERATING SPRING	1	
	XM-65183	BUSHING SLEEVE (REAR)	1	
	PL-5959	BEARING	1	
4A 51	AJS-643	ANTI-ROTATION PIN	1	
	XH-705C16	REAR CAP END (SHORT) ASS'D	1	*
4A 52	SL-651ME	DOWEL PIN	1	
	XE-190A	CAP SCREW	4	
	ED-5882	AIR TUBE CLAMP	2	
	SL-646ME	AIR TUBE CLAMP	3	
	SL-648ME	AIR TUBE CLAMP SCREW	3	
4A 53	AJS-131	AIR TUBE CLAMP SCREW	1	
4A 54	SL-502ME	PALLET SUPPORT (REAR)	1	
4A 55	AJS-1159	PALLET SUPPORT SCREW	2	
4A 56	SL-515ME	PALLET CLAMP	1	
4A 57	WL-3ME	PALLET CLAMP SCREW	1	
4A 58	AJS-132	PALLET CLAMP SCREW WASHER	1	
	SL-524ME	"Y" AXIS RACK	1	
	ZH-3175	"Y" AXIS RACK SCREW	2	
	XF-386C1	HOSE O CLIP	1	
	XF-346A1	PNEUMADYNE TUBE FITTING	1	
	XF-342B1	STRAIGHT FEMALE FITTING	1	
	AJS-315	STRAIGHT FITTING	1	
		COILED TUBE	1	

FIG ITEM PART NO.

DESCRIPTION

QTY.

4A 59	AJS-1198	PALLET UNLOADING PARTS	1
4A 60	SL-512ME	UNLOAD CYLINDER BRACKET	2
4A 61	WL-3ME	BRACKET SCREW	2
4A 62	XF-409D1	BRACKET SCREW WASHER	1
4A 63	CL-677E	UNLOADING CYLINDER	1
4A 64	XF-420A1	CYLINDER ROD SET SCREW COLLAR	1
4A 65	XF-383B1	CYLINDER ROD CLEVIS	1
4A 66	XF-342B1	ELBOW	1
	ED-5882	STRAIGHT FITTING	1
	ZH-3171	TUBE CLAMP	1
4A 67	AJS-128A	STRAIGHT FITTING	1
	AJS-1237	PALLET SUPPORT (FRONT) ASS'D	1
4A 68	AJS-1197	PALLET SUPPORT PIN	1
	EM-1734	UNLOADING LEVER LINK	1
4A 69	AJS-127	LINK RETAINING E-RING	1
4A 70	SPGL-510	SPRING BRACKET	1
		SPRING	1

*

 MECHANISM "X" AND "Y" DRIVE

 FIG ITEM PART NO. DESCRIPTION QTY.

FIG	ITEM	PART NO.	DESCRIPTION	QTY.
5A	1	AJS-319	"Y" AXIS SERVO GEAR HOUSING COMPLETE	1
		AJS-136A	SERVO GEAR HOUSING ASS'D	1
		PL-3ME	DOWEL	4
5A	2	AJS-143A	DRIVE AND PINION GEAR	1
5A	3	XM-590A12	SPRING WASHER	1
5A	4	XM-503B4	BEARING	1
5A	5	XM-501B3	BEARING	1
5A	6	XM-542L1	CAM ROLL FOLLOWER (ECCENTRIC)	1
5A	7	XH-604B4	NUT	1
5A	8	AJS-138	FOLLOWER GUARD	1
5A	9	AJS-113	FOLLOWER WIPER FELT	1
5A	10	SL-646ME	GUARD MOUNTING SCREW	2
5A	11	AJS-139A	SERVO MOTOR ADAPTOR ASS'D	2
		XH-705C16	DOWEL	1
5A	12	SL-515ME	ADAPTOR SCREW	1
5A	13	AJS-747	SERVO MOTOR	1
5A	14	SL-9H9	SERVO MOTOR SCREW	1
5A	15	WL-174	SERVO MOTOR SCREW WASHER	1
5A	16	SL-525ME	SERVO MOTOR MOUNTING SCREW	1
		ED-931ME-915	LEAD SPIRALWRAP	1
		ED-13581	CLAMP END CABLE TIE	3
		XH-500A24	SELF TAPPING SCREW	3
		MH-300A201	SCREW	1
		ED-5882	CABLE CLIPS	3
5B	1	AJS-318	"X" AXIS SERVO GEAR HOUSING COMPLETE	2
		AJS-136A	SERVO GEAR HOUSING ASS'D	1
		PL-3ME	DOWEL	4
5B	2	AJS-130	DRIVE AND PINION GEAR	1
5B	3	XM-590A12	SPRING WASHER	1
5B	4	XM-503B4	BEARING	1
5B	5	XM-501B3	BEARING	1
5B	6	XM-542L1	CAM ROLL FOLLOWER (ECCENTRIC)	1
5B	7	XH-604B4	NUT	1
5B	8	AJS-138	FOLLOWER GUARD	1
5B	9	AJS-113	FOLLOWER WIPER FELT	1
5B	10	SL-646ME	GUARD MOUNTING SCREW	2
5B	11	AJS-139A	SERVO MOTOR ADAPTOR ASS'D	2
		XH-705C16	DOWEL	1
5B	12	SL-515ME	ADAPTOR SCREW	1
5B	13	AJS-747	SERVO MOTOR	1
5B	14	AJS-125	FRONT SERVO MOTOR (WITHOUT TACHOMETER)	8
5B	15	SL-9H9	SERVO MOTOR SCREW	8
5B	16	WL-174	SERVO MOTOR SCREW WASHER	8
5B	17	SL-525ME	SERVO MOTOR MOUNTING SCREW	1
5B	18	AJS-141	SERVO MOTOR CROSS SHAFT (LONG)	1
5B	19	AJS-142	SERVO MOTOR CROSS SHAFT (SHORT)	1
5B	20	XM-601A6	SHAFT LOCKING COLLAR	2
5B	21	XM-601A7	CROSS SHAFT BINDING COLLAR	1
5B	22	MPCS-216	"X" AXIS RACK	2
		SL-525ME	"X" AXIS RACK SCREW	4
		WL-4ME	"X" AXIS RACK SCREW WASHER	2
5B	23	AJS-134	RACK SPACER ASS'D	1
		AJS-135	RACK SPACER INSERT	2
		PL-5875	SPACER RETAINING PIN	2
5B	24	SL-654ME	SPACER SCREW	1
		MPCS-487	CABLE SUPPORT	1
		SL-511ME	CABLE SUPPORT SCREW	1
		WL-3ME	CABLE SUPPORT SCREW WASHER	1

FIG ITEM PART NO.

DESCRIPTION

QTY.

6	15	NL-773E	SPRING PLUNGER BINDING NUT	1
6	16	UPL-1517	PRESSER FOOT CYLINDER (KEY NO.26)	1
6	17	XF-995B2	HEAD END VALVE (KEY NO.42)	1
6	18	XF-386B1	STRAIGHT FITTING	1
6	19	XF-995B2	ROD END VALVE (KEY NO.43)	1
6	20	XF-386B1	STRAIGHT FITTING	1
6	21	XH-400E54	CYLINDER LOCKING SCREW	1
6	22	WL-254E	SEATING	1
6	23	ACS-366	CYLINDER ROD CLEVIS	1
		NL-671E	CYLINDER CLEVIS NUT	1
6	24	ACS-235	LIFTING SLIDE	1
6	25	SL-17H17	LIFTING SLIDE SCREW	1
6	26	XH-604A8	LIFTING SLIDE SCREW NUT	1
		PL-3910	SLIDE DRIVE PIN	1
		PL-1055	COTTER PIN	1
6	27	ACS-451	THREAD RELEASE LEVER	1
		ACS-451-2	THREAD RELEASE LEVER BRACKET	1
6	28	ACS-450	RELEASE LEVER SPRING	1
6	29	XH-201C21	RELEASE LEVER SPRING SCREW	1
6	30	PL-897	FULCRUM RELEASE LEVER PIN	1
6	31	SL-11S5	FULCRUM PIN BINDING SCREW	1
		SL-1198ME	HOUSING CLAMPING SCREW	1
		MPCS-1172	NAME PLATE LABEL	1
		NOTE	SEWING HEAD MODIFICATION PARTS	
6	32	ACS-452	NEEDLE BAR LIFTING STUD	1
6	33	NL-785ME	STUD NUT	1
6	34	ACS-453	LIFTING FINGER PLATE	1
		ACS-453-1	LIFTING FINGER PLATE BASE	*
		ACS-453-2	LIFTING FINGER PLATE BLOCK	*
		ACS-453-3	LIFTING FINGER PLATE ARM	*
6	35	XH-201C42	LIFTING FINGER PLATE MOUNTING SCREW	2

 MECHANISM PNEUMATIC CUTTER PARTS

 FIG ITEM PART NO. DESCRIPTION QTY.

FIG	ITEM	PART NO.	DESCRIPTION	QTY.
7	1	AJS-1270A	CYLINDER MOUNTING BRACKET ASSEMBLED	1
		AJS-1271A	SPACER	3
		AJS-1272A	PIN	1
7	2	AJS-1273A	LEVER BRACKET	1
7	3	SL-524ME	LEVER BRACKET SCREW	2
7	4	WL-4ME	LEVER BRACKET SCREW WASHER	2
7	5	PF91-174068-15	HINGE PLATE	1
7	6	SL-1179ME	HINGE PLATE SCREW	2
7	7	WL-4ME	HINGE PLATE SCREW WASHER	2
7	8	PF91-168945-05	SPRING	1
7	9	PF91-174066-92	CLEVIS	1
7	10	PF12-640130-55	CLIP	1
7	11	AJS-1274	CYLINDER	1
7	12	XF-370G2	ELBOW	1
7	13	XF-995B2	VALVE	1
7	14	ADS-333	FITTING	1
7	15	ZH-2108	O RING SEAL	1
7	16	PF91-167680-05	SCREW	1
7	17	PF12-024171-15	NUT	1
7	18	PF91-174063-11	BRACKET	1
7	19	PF12-640150-55	CLIP	1
7	20	PF91-174070-15	BRACKET	1
7	21	PF91-069165-15	SCREW (BALL END)	1
7	22	PF12-305144-15	WASHER	1
7	23	PF12-024171-15	NUT	1
		NL-671ME	NUT	2
7	24	PF16-049020-11	BALL JOINT	1
7	25	PF91-174067-15	SHAFT	1
7	26	PF12-024171-15	NUT	1
7	27	PF16-049021-11	BALL JOINT	1
7	28	PF12-024172-15	NUT	1
		SL-540ME	BRACKET SCREW	2
		SL-1140ME	BRACKET SCREW	1

***** MECHANISM *****		HIGH LIFT RECIPROCATING PRESSER FOOT *****		*****	
FIG ITEM	PART NO.	DESCRIPTION	QTY.		
8	1	AJS-293	ECCENTRIC ARM LINK	1	
		MH-201B23	ARM LINK SCREW	1	
8	2	AJS-295	SPACER LINK	1	
8	3	AJS-296	SPACER LINK PIN	1	
		XH-901A5	RETAINER RING (5100-23)	1	
8	4	PF14-215013-13	LINK BEARING	3	
8	5	AJS-291	PRESSER FOOT LIFT LEVER	1	*
		AJS-292	LIFT LEVER PIN	1	
8	6	AJS-290	SPACER	1	
8	7	SL-1198ME	SPACER MOUNTING SCREW	2	
8	8	AJS-294	SPACER LINK PIN	1	
8	9	SL-60ME	SPACER LINK PIN BINDING SCREW	1	
8	10	AJS-786	PRESSER FOOT BAR (HIGH LIFT)	1	
8	11	AJS-784	PRESSER FOOT BAR GUIDE BUSHING	1	
		ZH-933M	BALL	1	*
8	12	AJS-785	NEEDLE BAR (HIGH LIFT)	1	
		AJS-761	NEEDLE COOLING PARTS COMPLETE	1	
		AJS-873	TUBE CLAMP MOUNTING PLATE	1	*
		SL-523ME	TUBE CLAMP MOUNTING PLATE SCREW	1	*
		SL-524ME	TUBE CLAMP MOUNTING PLATE SCREW	1	*
		WL-4ME	TUBE CLAMP MOUNTING PLATE WASHER	1	*
		AJS-874	TUBE CLAMP BASE	1	*
		SL-525ME	CLAMP BASE MOUNTING SCREW	1	*
		AJS-875	TUBE CLAMP	1	*
		SL-512ME	TUBE CLAMP MOUNTING SCREW	1	*
		MPCS-455	NEEDLE COOLING TUBE	1	*

 MECHANISM

 MOVABLE THROAT PLATE

 FIG ITEM PART NO. DESCRIPTION QTY.

FIG	ITEM	PART NO.	DESCRIPTION	QTY.
9	1	ACS-988	PRESSER FOOT (MEDIUM) (JOIN & SEW WORK)	1
		NOTE	AJS-494 MUST BE USED WITH ACS-988.	
9	2	AJS-409	BOBBIN COVER	1
9	3	AJS-407	LINK BRACKET	1
9	4	XH-205C11	BRACKET SCREW	3
9	5	AJS-494	MOVABLE THROAT PLATE (MEDIUM)	1
9	6	AJS-408	THROAT LINK ASS'D	1
		ACS-794	LINK PIN	1
		PL-5875	LINK PIN	1
9	7	CL-678E	SPLIT COLLAR	1
9	8	SL-4H4	SPLIT COLLAR SCREW	1
9	9	SL-3H11	STOP SCREW	1
9	10	NL-7M7	STOP SCREW NUT	1
9	11	XH-201C1	PLATE SCREW	1
9	12	AJS-214	UPPER TOGGLE LINK ASS'D	2
		AJS-215A	UPPER TOGGLE LINK PIN	1
		TCF-496	"E" RING	1
9	13	AJS-216	TOGGLE LOWER LINK	1
9	14	AJS-223	LOWER LINK FULCRUM PIN	1
9	15	SL-3N5	PIN SCREW	1
9	16	AJS-221	PISTON ROD CLEVIS	1
9	17	PL-6647	CLEVIS PIN	1
9	18	AJS-412	TOGGLE CYLINDER TRUNNION	1
9	19	XH-201C36	TRUNNION SCREW	1
9	20	PL-1332	TRUNNION PIN	1
9	21	XM-110E25	EXTENSION SPRING	2
9	22	XH-707A17	SPRING PIN	1
9	23	XF-412A41	TOGGLE CYLINDER	1
9	24	NL-671E	PISTON ROD CHECK NUT	1
9	25	XF-386B3	STRAIGHT FITTING	1
		XF-376D4	"LOW" BARBED TUBE TEE	1
		ZH-1375M	CYLINDER ADAPTOR	1
		ZH-1185M	CYLINDER VALVE	1
		ZH-634M	VALVE ELBOW	1
		ZH-551M	STEM ELBOW	1
		ZH-474M	NUT	1
		ZH-475M	OLIVE	1
		ZH-591M	ADAPTOR	1
		ZH-1376M	ADAPTOR	1

 MECHANISM PALLET HANDLING PARTS

 FIG ITEM PART NO. DESCRIPTION QTY.

		PALLET LOADING (RH)	
FIG ITEM	PART NO.	DESCRIPTION	QTY.
10A	1	AJS-1220	1
10A	2	AJS-74	2
10A	3	BL-1396E	1
10A	4	MH-201B20	4
10A	5	MPCS-484	1
10A	6	PL-2033E	2
10A	7	SL-538ME	2
10A	8	WL-5ME	2
10A	9	AJS-1219	1
10A	10	XF-413C10	1
10A	11	UPL-1359	1
10A	12	XF-995B2	1
10A	13	XF-386B1	1
10A	14	XF-420A2	1
10A	15	PL-1026	1
		PL-1055	1
		MPCS-483	1
		SL-554ME	1
		NL-234ME	1
		AJS-1573	1
		MH-201B67	1
		WL-5ME	1
		MPCS-4193-COLL	1
		MPCS-4194-CPTE	1
10A	16	MPCS-4048	1
10A	17	MPCS-4048-1	1
10A	18	MPCS-4049	1
10A	19	PL-103ME	1
10A	20	PL-1055	1
		SPGL-1191E	1
		WL-6ME	1
10A	21	SL-534ME	1
10A	22	WL-5ME	2
10A	23	MPCS-4183	2
10A	24	SL-534ME	1
10A	25	WL-5ME	2
10A	26	MPCS-4191	2
10A	27	SL-516ME	1

FIG ITEM PART NO.

DESCRIPTION

QTY.

FIG ITEM PART NO.	DESCRIPTION	QTY.
10C 1	MPCS-470A	1
10C 2	MH-201B69	2
10C 3	WL-67ME	2
10C 4	MPCS-472A	1
10C 5	SL-526ME	2
10C 6	NL-4ME	2
10C 7	WL-4ME	2
10C 8	MPCS-471	1
10C 9	SL-524ME	2
10C 10	WL-4ME	2
10C 11	MPCS-481	1
10C 12	SL-535ME	1
10C 13	WL-5ME	1
10C 14	AJS-860B88-2P1	1
	SL-9C15	4
	MPCS-509	5
10C 15	MPCS-482	1
10C 16	SL-500ME	2
10C 17	WL-2ME	2

PALLET STOP AND IDENTIFICATION

SENSOR SUPPORT
 SENSOR SUPPORT SCREW
 SENSOR SUPPORT SCREW WASHER
 PALLET STOP
 PALLET STOP SCREW
 PALLET STOP SCREW NUT
 PALLET STOP SCREW WASHER
 BACK-UP PLATE
 BACK-UP PLATE SCREW
 BACK-UP PLATE SCREW WASHER
 SENSOR MOUNTING PLATE
 SENSOR MOUNTING PLATE SCREW
 PLATE MOUNTING SCREW WASHER
 OPTICAL PALLET SENSOR PC BOARD
 PC BOARD MOUNTING SCREW
 PALLET SENSOR TARGETS
 PALLET SENSOR COVER
 PALLET SENSOR COVER SCREW
 COVER SCREW WASHER

FIG ITEM PART NO.

DESCRIPTION

QTY.

FIG ITEM PART NO.	DESCRIPTION	QTY.
10D 1	PALLET EJECTION (LH)	
10D 1	CHUTE SUPPORT BRACKET	1
10D 2	BRACKET SCREW	2
10D 2	BRACKET SCREW WASHER	2
10D 3	CHUTE SUPPORT (FRONT)	1
10D 4	CHUTE CUSHION	1
10D 4	CHUTE SUPPORT (REAR)	1
10D 5	CHUTE CUSHION	1
10D 6	CHUTE SUPPORT SCREW	2
10D 7	CHUTE SUPPORT WASHER	2
10D 8	CHUTE SUPPORT NUT	2
10D 9	PALLET EJECTION CHUTE (LH)	1
10D 10	CHUTE SCREW	4
10D 11	CHUTE SCREW WASHER	4
10D 12	CHUTE SCREW NUT	4
10D 13	MICROSWITCH SPRING	1
10D 14	PALLET SLIDE (LH)	1
10D 15	PALLET SLIDE SCREW	2
10D 16	SHOCK ABSORBER BRACKET	1
10D 17	BRACKET SCREW	2
10D 18	BRACKET SCREW WASHER	2
10D 19	SHOCK ABSORBER	1
10D 20	CHUTE EXTENSION	1
10D 21	CHUTE EXTENSION SCREW	2
10D 22	CHUTE EXTENSION SCREW WASHER	2
10D 23	EJECTION SWITCH BRACKET	1
10D 24	BRACKET SCREW	2
10D 25	BRACKET SCREW NUT	2
10D 26	EJECTION SWITCH (KEY NO.58)	1
10D 27	EJECTION SWITCH SCREW	2
10D 28	EJECTION SWITCH SCREW WASHER	2
10D 28	EJECTION SWITCH SCREW NUT	2

FIG ITEM PART NO.

DESCRIPTION

QTY.

FIG ITEM	PART NO.	DESCRIPTION	QTY.
10E	1	MPCS-342A PALLET EJECTION (RH)	1
		CHUTE SUPPORT BRACKET	
		CHUTE SUPPORT BRACKET SCREW	2
		BRACKET SCREW WASHER	2
10E	2	MPCS-354 CHUTE SUPPORT (FRONT)	1
10E	3	AJS-1269 CHUTE CUSHION	1
10E	4	AJS-1224 CHUTE SUPPORT (REAR)	1
		CHUTE CUSHION	1
10E	5	AJS-1269 CHUTE SUPPORT SCREW	2
10E	6	SL-536ME CHUTE SUPPORT SCREW WASHER	2
10E	7	WL-5ME CHUTE SUPPORT SCREW NUT	2
10E	8	NL-237ME PALLET EJECTION CHUTE (RH)	1
10E	9	AJS-1221 CHUTE SCREW	3
10E	10	SL-715ME CHUTE SCREW WASHER	3
10E	11	WL-5ME CHUTE SCREW NUT	3
10E	12	NL-237ME PALLET SLIDE (RH)	1
10E	13	AJS-1225 PALLET SLIDE SCREW	2
10E	14	SL-1179ME PALLET SLIDE SCREW WASHER	2
10E	15	WL-4ME SHOCK ABSORBER BRACKET	1
10E	16	AJS-1233 BRACKET SCREW	2
10E	17	MH-201B41 BRACKET SCREW WASHER	2
10E	18	WL-4ME SHOCK ABSORBER	1
10E	19	XF-470F4 CHUTE EXTENSION	1
10E	20	AJS-1248 CHUTE EXTENSION SCREW	2
10E	21	MH-300A201 CHUTE EXTENSION SCREW WASHER	2
		WL-4ME	

 MECHANISM

 SEWING MACHINE DRIVE AND BELT GUARD PARTS

 FIG ITEM PART NO. DESCRIPTION QTY.

SEWING MACHINE DRIVE PARTS

11	1	MPCS-407	DRIVE MOTOR UNIT	1	*
		NOTE	SUPPLIED WITH CLUTCH, BRAKE,		
		NOTE CONT.	SHOCK ABSORBERS AND WASHERS.		
11	2	MPCS-418	NEEDLE POSITIONER	1	*
11	3	ED-1124ME	CONTROL BOX	1	*
		MPCS-865B95-1	PC MOTOR LOGIC CONTROL BOARD		
		XE-176A3-4X5	SINGLE STRANDED COPPER WIRE		
		XE-869C1	CAUTION (STATIC SENSITIVE) LABEL		
		MPCS-865B96-1	PC MOTOR SPEED CONTROL BOARD		
		XE-176A3-2X5	SINGLE STRANDED COPPER WIRE		
		XE-869C1	CAUTION (STATIC SENSITIVE) LABEL		
		XE-227M204	POTENTIOMETER, PC 200K		
		RCPH-100K/K500	POTENTIOMETER, PC 100K		
		RCFA-100K/J250	RESISTOR, 100K - 1/4W		
		PCBA-93B	PC MOTOR INTERFACE BOARD		
		XH-300C63	PC BOARD MOUNTING SCREW		
		WL-1299E	WASHER		
		UP-1958	HOLE PLUG		
		XH-301C83	SCREW, UNIT		
		WL-1920	WASHER		
		NL-11M1	NUT		
		MPCS-1059-COLL	MOTOR CABLE ASSEMBLY		
		MPCS-555	CABLE, ASSEMBLY		
		XE-155A3-16	CABLE, RIBBON 15 WAY, (22AWG)		
		XE-269MB15	CONNECTOR, 15 PIN		
		XE-269MB20	CONNECTOR, 20 PIN		
		XE-269MC2	TERMINAL		
		XE-805B1	POTENTIOMETER, 100, 2W, 20%		
		XE-111A4-X5	SLEEVEING, HEAT SHRINK		
		MPCS-554	CABLE, ASSEMBLY		
		XE-155A2-10	CABLE, 10 CONDUCTOR, (22AWG)		
		XE-269MB06	CONNECTOR, 6 PIN		
		XE-269MC2	TERMINAL		
		XE-266E106	CONNECTOR, 6 PIN FEMALE		
		XE-266C13	TERMINAL, MALE		
		MPCS-552	CABLE, ASSEMBLY		
		XE-269MB12	CONNECTOR, 12 PIN		
		XE-269MC2	TERMINAL		
		XE-266E112	CONNECTOR, 12 PIN FEMALE		
		XE-266C13	TERMINAL, FEMALE		
		XE-155A3-5	CABLE, 15 CONDUCTOR, (22AWG)		
		XE-170A4-7	WIRE, (20AWG) (COPPER GREEN)		
		ED-922ME	TERMINAL, RING, (22-16AWG) (W10 STUD)		
		XE-266F162	CONNECTOR, 12 PIN MALE		
		MPCS-386A	BRACKET, STITCHER MOTOR		
11	4	SL-200ME	SCREW, DRIVE MOUNTING	1	*
11	5	NL-234ME	NUT	1	*
		MH-201B102	SCREW, ADAPTOR		
11	6	MPCS-427	"VEE" BELT	1	*
11	7	MPCS-387	ANTI-ROTATION BRACKET	1	*
		MPCS-387-1	BRACKET BLOCK		
11	8	MH-201B98	BRACKET SCREW	1	*

BELT GUARD PARTS

11	9	MPCS-413	DRIVE BELT GUARD (UPPER)	1
11	10	SL-522ME	DRIVE BELT GUARD SCREW	1
11	11	WL-4ME	DRIVE BELT GUARD SCREW WASHER	1
11	12	SL-534ME	DRIVE BELT GUARD SCREW	1
11	13	MPCS-414	BELT DRIVE GUARD STANDOFF	1
11	14	MH-201B67	BELT DRIVE GUARD STANDOFF SCREW	1
11	15	WL-5ME	GUARD STANDOFF SCREW WASHER	1
11	16	MPCS-411	BELT DRIVE GUARD	1
11	17	MH-201B66	BELT DRIVE GUARD SCREW	1
11	18	MPCS-424	BELT DRIVE REAR GUARD	1
11	19	SL-32ME	BELT DRIVE REAR GUARD SCREW	1
11	20	NL-237ME	BELT DRIVE REAR GUARD SCREW NUT	1
11	21	MPCS-412	DRIVE BELT GUARD (LOWER)	1
		SL-648ME	LOWER GUARD SCREW	2
		WL-3ME	LOWER GUARD SCREW WASHER	2
		XE-190D14	"P" CLIP	1
11	22	AJS-432	MACHINE TIMING INDICATOR	1
11	23	AJS-386	PULLEY LOWER GUARD	1
11	24	XH-201C41	INDICATOR SCREW	1
11	25	WL-1301E	INDICATOR SCREW WASHER	1

 MECHANISM

 FIG ITEM PART NO. DESCRIPTION QTY.

FIG ITEM PART NO.	DESCRIPTION	QTY.
	CABLE STITCH PARTS (TO ORDER)	
12A	MPCS1-125	1
12A	AJS-1468	1
12A	MPCS-561	1
12A	MPCS-562	1
12A	MH-302B180	1
12A	ACS-647	1
12A	MPCS-1192	1
	PF91-174475-91	1
	ACS-543	1
	ACS-540	1
12A	ACS-578	1
12A	MPCS-565	1
12A	ACS-989	1
12A	AJS-492	1
	NOTE	
	MPCS-564	1
	ACS-5036	1
	NOTE	
	NOTE	
	ACS-990	1
	AJS-493	1
	PRESSER FOOT (LARGE) (JOIN AND SEW WORK)	
	MOVABLE THROAT PLATE (LARGE)	
	PARTS FOR CABLE STITCH WORK (FLUSH FOOT)	
	CABLE STITCH THROAT PLATE	
	CABLE STITCH PRESSER FOOT (FLUSH FOOT)	
	PARTS FOR CLOSE EDGE WORK (TO ORDER)	
	PRESSER FOOT (JOIN AND SEW WORK)	
	MOVABLE THROAT PLATE	

FIG ITEM PART NO.

DESCRIPTION

QTY.

PF91-010215-05
NOTE

TENSION CONTROL SPRING (HEAVY) (TO ORDER)

TENSION CONTROL SPRING
DIS-ASSEMBLE PF91-006584-05 FROM MPCSA-457A

1

FIG ITEM PART NO.

DESCRIPTION

QTY.

12B	1	MPCS-212	SERVICE KIT (TO ORDER)	1	*
12B	1	AJS-1157	SERVICE KIT (STANDARD MACHINE)	1	*
12B	2	ACS-483	CALIBRATION PALLET (9" X 16")	1	*
12B	3	ACS-5070	CALIBRATION PIN	1	*
12B	4	MPCS-4145	NEEDLE BAR CALIBRATION PLATE	1	*
12B	5	ACS-467	TEST PALLET (9" X 16")	1	*
12B	6	ACS-473	KNIFE GAUGE	1	*
12B	7	XE-869A1	BLOCKING PIN	1	*
12B	8	XE-869D1	CONDUCTIVE WRIST STRAP	1	*
12B	20	SSID-2817A-250	PC BOARD METAL CONTACT CLEANER	20	*
	1		IC EPROM (ELECTRICALLY ERASABLE) BLANK	1	*

FIG ITEM PART NO.	DESCRIPTION	QTY.
	IN-MACHINE PROM MAKER (ENGLISH) (TO ORDER)	
PDS-1178-CPTE	IMPM DIGITIZING PARTS WITHOUT OPTICS	1
MPCS-383	ENCLOSURE PARTS COMPLETE	1
MPCS-382	OPERATOR CONTROL ENCLOSURE	1
MPCS-390	ENCLOSURE HOLDOWN SPRING	1
MPCS-1310	BUMPER	3
SL-525ME	BUMPER SCREW	3
WL-4ME	WASHER	3
NL-236ME	NUT	3
MPCS-381	BACKUP PANEL	1
MPCS-380	FACE PLATE	1
SL-655ME	PANEL SCREW	4
MH-300B181	PANEL SCREW	4
MPCS-860B94-1P	IMPM KEYBOARD PC BOARD ASS'D	1
MH-300B181	PC BOARD MOUNTING SCREW	4
AJS-839	IMPM JOYSTICK TO KEYBOARD CABLE ASS'D	1
XE-269E5	PUSH-IN HEADER	1
XE-228A1	CONTROL STICK POTENTIOMETER	1
XE-170J1-6	BLACK INSULATED COPPER WIRE	4
XE-170J1-4	BLACK INSULATED COPPER WIRE	2
XE-111A5-X5	HEAT SHRINKABLE SLEEVE	6
AFS-1041	CONTROL STICK BOOT	1
AFS-1040	CONTROL STICK COVER PLATE	1
SL-3017	POTENTIOMETER SCREW	4
WL-1947	POTENTIOMETER SCREW WASHER	4
NL-3M3	POTENTIOMETER SCREW NUT	4
MH-308A187	BACK UP AND FACE PANEL SCREW	4
XH-662B3	WASHER	4
MPCS-860B89-2	PROM MAKER INTERFACE PC BOARD ASS'D	1
MPCS-546	DIGITIZING CABLE(W4) ASS'D	1
XE-157A2-50	FLAT CABLE	1
XE-265H1	25 PIN CONNECTOR	1
AJS-1129	DIGITIZING SHIPPING CONTAINER	2
CAT-3/133/3	INSTALLATION/OPERATING INSTRUCTIONS	1
MPCS-4187	KEYCAPS	1
MPCS-446	LIGHTED 'STCH' KEYCAP (FOR S1)	1
MPCS-447	LIGHTED 'CPT' KEYCAP (FOR S1)	1
MPCS-448	LIGHTED 'SLEW' KEYCAP (FOR S3)	1
MPCS-449	LIGHTED 'DEL' KEYCAP (FOR S4)	1
MPCS-434	NON LIGHTED 'REV' KEYCAP (FOR S5)	1
MPCS-433	NON LIGHTED 'FWD' KEYCAP (FOR S6)	1

MPCS-4E-CPTE	DIGITIZER PROJECTOR FOR IMPM (TO ORDER)	
AJS-1130	DIGITIZER PROJECTOR PARTS COMPLETE	1
PL-459E	PROJECTOR BRACKET ASS'D	*
AJS-1139	PROJECTOR BRACKET PIN	*
PL-993ME	ADJUSTING CLEVIS	*
PL-1837	ADJUSTING CLEVIS PIN	*
SPGL-617E	RETAINING PIN	*
AJS-1131	ADJUSTING CLEVIS SPRING	*
AJS-1137	PROJECTOR CLAMP BRACKET	*
AJS-1132	ADJUSTING CLEVIS PIN NUT	*
AJS-1133	PIVOT BLOCK	*
SL-56ME	PIVOT BLOCK PIN	*
SL-512ME	PIVOT BLOCK PIN SET SCREW	*
AJS-1134	PIVOT BLOCK MOUNTING SCREW	*
SL-502ME	PROJECTOR CLAMP	2
MH-200A161	PROJECTOR CLAMP SCREW	1
WL-3ME	PROJECTOR CLAMP LOCKING SCREW	1
AJS-1136	LOCKING SCREW WASHER	1
SPGL-902E	ADJUSTING CLAMP SCREW	1
BUTF-415	ADJUSTING CLAMP SCREW SPRING	1
AJS-1141	ADJUSTING CLAMP SCREW RETAINING PIN	1
AJS-488	PROJECTOR	1
SL-510ME	MAGNIFYING LENS	1
XM-110E10	LENS MOUNTING SCREW	1
SL-513ME	BACKLASH SPRING	2
NL-673E	BACKLASH SPRING SCREW	1
WL-1305E	PROJECTOR ATTACHING NUT	2
AJS-324	PROJECTOR ATTACHING NUT WASHER	1
AJS-357	PROJECTOR CLAMP LOCKING SCREW WRENCH	1
AJS-322	PROJECTOR CLAMP LOCKING SCREW WRENCH	1
NOTE	ILLUMINATOR (WITH 12 FT CORD)	1
NOTE CONT.	ILLUMINATOR LAMP (SPARE FOR AJS-357	1
NOTE CONT.	CAUTION DO NOT TUOCH BULB WITH NAKED	1
AJS-358	HAND. QUARTZ HALOGEN BULB SENSITIVE	*
AJS-359	TO OIL IN SKIN)	*
SL-5342E	FIBRE OPTIC LIGHT PIPE	1
ZH-3176	FIBRE OPTIC LIGHT PIPE ADAPTOR	1
	ADAPTOR SCREW	*
	THUMB SCREW	1

FIG ITEM PART NO.	DESCRIPTION	QTY.
	LANGUAGE VARIATIONS FOR IMPM (T/O)	
	IN MACHINE PROM MAKER (FRENCH) (T/O)	
	IMPM DIGITIZING PARTS WITHOUT OPTICS	1
	FRENCH KEYCAP SET	1
	LIGHTED "POINT" KEYCAP (FOR S1)	1 *
	LIGHTED "ANGLE" KEYCAP (FOR S2)	1 *
	LIGHTED "TRANS" KEYCAP (FOR S3)	1 *
	LIGHTED "NUL" KEYCAP (FOR S4)	1 *
	NON-LIGHTED "RECU" KEYCAP (FOR S5)	1 *
	NON-LIGHTED "AVANCE" KEYCAP (FOR S6)	1 *
	NOTE	
	IN MACHINE PROM MAKER (ITALIAN) (T/O)	
	IMPM DIGITIZING PARTS WITHOUT OPTICS	1
	ITALIAN KEYCAP SET	1
	LIGHTED "CUCI" KEYCAP (FOR S1)	1 *
	LIGHTED "ANGOLO" KEYCAP (FOR S2)	1 *
	LIGHTED "SPOSTA" KEYCAP (FOR S3)	1 *
	LIGHTED "CANCEL" KEYCAP (FOR S4)	1 *
	NON-LIGHTED "INDIET" KEYCAP (FOR S5)	1 *
	NON-LIGHTED "AVANTI" KEYCAP (FOR S6)	1 *
	NOTE	
	IN MACHINE PROM MAKER (SPANISH) (T/O)	
	IMPM DIGITIZING PARTS WITHOUT OPTICS	1
	SPANISH KEYCAPS SET	1
	LIGHTED "PUNTAD" KEYCAP (FOR S1)	1 *
	LIGHTED "ANGULO" KEYCAP (FOR S2)	1 *
	LIGHTED "SALTO" KEYCAP (FOR S3)	1 *
	LIGHTED "BORRAR" KEYCAP (FOR S4)	1 *
	NON-LIGHTED "RETRO" KEYCAP (FOR S5)	1 *
	NON-LIGHTED "AVANCE" KEYCAP (FOR S6)	1 *
	NOTE	
	IN MACHINE PROM MAKER (GERMAN) (T/O)	
	IMPM DIGITIZING PARTS WITHOUT OPTICS	1
	GERMAN KEYCAP SET	1
	LIGHTED "STICH PUNKT" KEYCAP (FOR S1)	1 *
	LIGHTED "SET PUNKT" KEYCAP (FOR S2)	1 *
	LIGHTED "LEER FAHRT" KEYCAP (FOR S3)	1 *
	LIGHTED "LOSCHEN" KEYCAP (FOR S4)	1 *
	NON-LIGHTED "RUCKL" KEYCAP (FOR S5)	1 *
	NON-LIGHTED "VORLAUF" KEYCAP (FOR S6)	1 *
	NOTE	
	IN MACHINE PROM MAKER (SPANISH) (T/O)	
	IMPM DIGITIZING PARTS WITHOUT OPTICS	1
	SPANISH KEYCAPS SET	1
	LIGHTED "PUNTAD" KEYCAP (FOR S1)	1 *
	LIGHTED "ANGULO" KEYCAP (FOR S2)	1 *
	LIGHTED "SALTO" KEYCAP (FOR S3)	1 *
	LIGHTED "BORRAR" KEYCAP (FOR S4)	1 *
	NON-LIGHTED "RETRO" KEYCAP (FOR S5)	1 *
	NON-LIGHTED "AVANCE" KEYCAP (FOR S6)	1 *
	NOTE	
	IN MACHINE PROM MAKER (GERMAN) (T/O)	
	IMPM DIGITIZING PARTS WITHOUT OPTICS	1
	GERMAN KEYCAP SET	1
	LIGHTED "STICH PUNKT" KEYCAP (FOR S1)	1 *
	LIGHTED "SET PUNKT" KEYCAP (FOR S2)	1 *
	LIGHTED "LEER FAHRT" KEYCAP (FOR S3)	1 *
	LIGHTED "LOSCHEN" KEYCAP (FOR S4)	1 *
	NON-LIGHTED "RUCKL" KEYCAP (FOR S5)	1 *
	NON-LIGHTED "VORLAUF" KEYCAP (FOR S6)	1 *

FIG ITEM PART NO.

DESCRIPTION

QTY.

XE-392C6	REPLACEMENT PARTS (TO ORDER)	
ED-10500A	KEYBOARD LAMP (REPLACEMENT FOR XE389B2)	1
NOTE	CONTACTOR COIL 110V 60HZ (REPLACEMENT FOR ED-9809E)	1
ED-3259	CONTACTOR COIL 110V 50HZ (REPLACEMENT FOR ED-9809E)	1
NOTE	REPAIR KIT (REPLACEMENT FOR XF-704B4)	1
XF-406E2	NEEDLE POSITIONER (REPLACEMENT FOR MPCS-407)	1
MPCS-418	ENCODER (REPLACEMENT FOR AJS-747)	1
NOTE	SERVO MOTOR BRUSH KIT (REPLACEMENT FOR AJS-747)	1
MPCS-465	PROJECTOR BODY (REPLACEMENT FOR AJS-1141)	1
AJS-750	BLACKLINE RETICLE (ENGLISH SIZE)	1
NOTE	REPLACEMENT FOR AJS-1141)	1
AJS-1149	THROAT PLATE (REPLACEMENT FOR MPCS-461)	
AJS-1145		
NOTE		
ACS-478		

FIG ITEM PART NO.

DESCRIPTION

QTY.

XF-470F3

DECORATIVE PALLET WORK (TO ORDER)

SHOCK ABSORBER (DECORATIVE PALLET)

1

FIG ITEM PART NO.

DESCRIPTION

QTY.

AJS-1152
AJS-1153
ZH-3166
AJS-282
AJS-283
WL-3ME
MH-603A12

ACS PALLET ADAPTOR KIT (TO ORDER)

PALLET ADAPTOR ASS'D
ADAPTOR STIFFENER
STIFFENER POP RIVET
PALLET ADAPTOR STUD
PALLET ADAPTOR STUD (SLABBED)
WASHER
LOCKNUT

1
1 *
5 *
1
1
2
2

MPCS-461	EXTENDED HEAD OPTION (TO ORDER)	1
MPCS-462	SEWING MACHINE UNIT	1
PL-458E	SEWING HEAD ADAPTOR ASS'D	2
AJS-662A	SEWING HEAD LOCATING PIN	1
MPCS-489	HINGE PIVOT BRACKET	1
AJS-101	RACK COVER	1
MH-201B41	'X' AXIS RAIL	2
AJS-133	'X' AXIS RAIL SCREW	2
MPCS-4180	'X' AXIS RACK	2
MPCS-490	DIGITAL CONTROLLER PC BOARD (EXTENDED HEAD)	1
NOTE	HEAVY AND LIGHT DECAL	1
MPCS-492	AFFIX TO INSIDE OF FRONT DOOR	1
MH-201B41	PALLET STOP	1
AJS-1467	PALLET STOP SCREW	2
CAT-3/133/2	ADJUSTING ROD	1
NOTE	EXTENDED HEAD CATALOGUE	1
NOTE CONT.	WHEN THE ABOVE PARTS ARE FITTED THE	
NOTE CONT.	FOLLOWING REGULAR PARTS ARE NOT REQUIRED	
NOTE CONT.	PL-461E, MH-201D53 (2), MPCS-485, MPCS-486,	
NOTE CONT.	MPCS-457A, MPCS-860B86-1P11, PF91-174067-15,	
NOTE CONT.	MPCS-374, MPCS-374, MPCS-216, MPCS-488,	
NOTE CONT.	MPCS-458, AJS-307.	
MPCS-1E	SERVICE KIT (EXTENDED HEAD)	1
AJS-321	CALIBRATION PALLET (14" X 16")	1
ACS-5070	NEEDLE BAR CALIBRATION PLATE	1
AJS-200	TEST PALLET (14" X 16")	1
ACS-467	KNIFE GAUGE	1
ACS-473	BLOCKING PIN	1
XE-869A1	CONDUCTIVE WRIST STRAP	1
XE-869D1	PC BOARD METAL CONTACT CLEANER	1
XE-870L21	IC EPROM (ELECTRICALLY ERASABLE) BLANK	20
		1

EXTENDED OPTION 3550 (TO ORDER)

MPCS-1121	UPPER LH FRAME	1	*
MPCS-1121-1	TOP	1	*
MPCS-1121-2	BOTTOM REAR	1	*
MPCS-1121-3	FRONT	1	*
MPCS-1121-4	FRONT RIGHT	1	*
MPCS-1121-5	UPPER RIGHT	1	*
MPCS-1121-6	UPPER LH	1	*
MPCS-501-5	ITEM NO.5	1	*
MPCS-501-8	ITEM NO.8	1	*
MPCS-501-10	ITEM NO.10	1	*
MPCS-501-11	UPPER FRAME REAR SUPPORT	1	*
MPCS-501-12	UPPER FRAME REAR SUPPORT	1	*
MPCS-501-13	UPPER LH FRAME REAR SUPPORT	1	*
MPCS-1124	WORK SHELF	1	*
MPCS-1126	COVER TOP LEFT REAR	1	*
NOTE	Y AXIS PARTS		
MPCS-1094A	SHAFT (Y AXIS GUIDE)	1	
MPCS-1117	RACK (Y AXIS)	1	
MPCS-1118	Y HOUSING EXTENSION	1	
SL-514ME	EXTENSION SCREW	4	
WL-3ME	SCREW WASHER	4	
XH-705C16	DOWEL PIN	1	
MPCS-1119	SWITCH EXTENSION BRACKET	1	
SL-504ME	BRACKET SCREW	1	
SL-511ME	BRACKET SCREW	2	
SL-514ME	BRACKET SCREW	1	
AJS-315	COILED TUBE (CUT TO 22 COILS)	2	
MPCS-2112	ROD TUBE GUIDE	2	
NOTE	PALLET LOADING PARTS		
MPCS-1180	PALLET STOP BRACKET	1	*
MPCS-1180-1	BRACKET	1	*
MPCS-1180-2	HINGE	2	*
MPCS-1180-3	TUBE	1	*
MPCS-1181	PALLET STOP	1	*
MPCS-1181-1	STOP	1	*
MPCS-1181-2	TUBE	1	*
MPCS-4130	HINGE PIN	1	
PL-1055	COTTER PIN	1	
SL-536ME	STOP BINDING SCREW	1	
WL-5ME	WASHER	2	
NL-5ME	NUT	2	
NOTE	PALLET UNLOADING PARTS		
MPCS-1100	EXTENSION CHUTE	2	*
AJS-1248-1	PAD	1	*
NOTE	WHEN THE ABOVE PARTS ARE USED THE		
NOTE CONT.	FOLLOWING REGULAR PARTS ARE NOT REQUIRED.		
NOTE CONT.	AJS-110, MPCS-58A, AJS-382, MPCS-501,		
NOTE CONT.	MPCS-610-1, MPCS-610-2, MPCS-610-4,		
NOTE CONT.	MPCS-375A, MPCS-493, AJS-1248(2), AJS-132.		
NOTE	SERVICE KIT 3550 OPTION		
MPCS-1155	SERVICE KIT 3550	1	*
MPCS-1120	CALIBRATION PALLET (35" X 50")	1	*
ACS-483	CALIBRATION PIN	1	*
ACS-5070	NEEDLE BAR CALIBRATION PIN	1	*
MPCS-2123	TEST PALLET (35" X 50")	1	*
ACS-467	KNIFE GAUGE	1	*
ACS-473	BLOCKING PIN	1	*
XE-869A1	CONDUCTIVE WRIST STRAP	1	*
XE-869D1	PC BOARD METAL CONTACT CLEANER	30	*
SSID-2817A-250	IC EPROM (ELECTRICALLY ERASABLE BLANK)	1	*

PARTS FOR GERMAN SPEAKING COUNTRIES (T/O)

MPCS-1048-G	CONTROL PANEL LEGEND PLATE	1	*
MPCS-2E-G	GERMAN KEYCAP SET	1	*
MPCS-440-G	KEYCAP "START"	1	*
MPCS-445-G	KEYCAP "STOP"	1	*
MPCS-439-G	KEYCAP "DURCH LAUF"	1	*
MPCS-436-G	KEYCAP "RUCKSTELL"	1	*
MPCS-444-G	KEYCAP "FUSS ABW"	1	*
MPCS-433-G	KEYCAP "VORLAUF"	1	*
MPCS-437-G	KEYCAP "WEITER"	1	*
MPCS-441-G	KEYCAP "KLEMMEN"	1	*
MPCS-434-G	KEYCAP "RUCKEL"	1	*
MPCS-438-G	KEYCAP "FUHREN SIE AUS"	1	*
MPCS-442-G	KEYCAP "SPULE"	1	*
MPCS-443-G	KEYCAP "SCHNELL"	1	*
MPCS-432-G	KEYCAP "AUFW"	1	*
MPCS-431-G	KEYCAP "ABW"	1	*
MPCS-435-G	KEYCAP "KALIBR"	1	*
AFS-2167-G	GERMAN CAP (SPLIT LENS)	1	*

NOTE
NOTE CONT.
NOTE CONT.
NOTE

WHEN THE ABOVE PARTS ARE FITTED THE FOLLOWING REGULAR PARTS ARE NOT REQUIRED
MPCS-1048, MPCS-2E, AFS-2167.

PARTS FOR FRENCH SPEAKING COUNTRIES (T/O)

MPCS-1048-F	CONTROL PANEL LEGEND PLATE	1	*
MPCS-2E-F	FRENCH KEYCAP SET	1	*
MPCS-440-F	KEYCAP "MARCHE"	1	*
MPCS-445-F	KEYCAP "ARRET"	1	*
MPCS-439-F	KEYCAP "SORTIE"	1	*
MPCS-436-F	KEYCAP "MISE A"	1	*
MPCS-444-F	KEYCAP "PIED BAS"	1	*
MPCS-433-F	KEYCAP "AVANCE"	1	*
MPCS-437-F	KEYCAP "SUIVANT"	1	*
MPCS-441-F	KEYCAP "VERROU"	1	*
MPCS-434-F	KEYCAP "RECU"	1	*
MPCS-438-F	KEYCAP "EXECUTE"	1	*
MPCS-442-F	KEYCAP "CANETTE"	1	*
MPCS-443-F	KEYCAP "RAPIDE"	1	*
MPCS-432-F	KEYCAP "HAUT"	1	*
MPCS-431-F	KEYCAP "BAS"	1	*
MPCS-435-F	KEYCAP "CALIBRAGE"	1	*
AFS-2167-F	FRENCH GREEN CAP (SPLIT LENS)	1	*

NOTE
NOTE CONT.
NOTE CONT.
NOTE

WHEN THE ABOVE PARTS ARE FITTED THE FOLLOWING REGULAR PARTS ARE NOT REQUIRED
MPCS-1048, MPCS-2E, AFS-2167.

PARTS FOR ITALIAN SPEAKING COUNTRIES (T/O)

MPCS-1048-I	CONTROL PANEL LEGEND PLATE	1	*
MPCS-2E-I	ITALIAN KEYCAP SET	1	*
MPCS-440-I	KEYCAP "PARTENZA"	1	*
MPCS-445-I	KEYCAP "STOP"	1	*
MPCS-439-I	KEYCAP "USCITA"	1	*
MPCS-436-I	KEYCAP "RIPOSIZIONE"	1	*
MPCS-444-I	KEYCAP "PIED GIU"	1	*
MPCS-433-I	KEYCAP "AVANTI"	1	*
MPCS-437-I	KEYCAP "SUCCES SIVO"	1	*
MPCS-441-I	KEYCAP "BLOCC"	1	*
MPCS-434-I	KEYCAP "INDIET"	1	*
MPCS-438-I	KEYCAP "FAI"	1	*
MPCS-442-I	KEYCAP "BOBINA"	1	*
MPCS-443-I	KEYCAP "VELOCE"	1	*

 PART NUMBER PAGE NUMBER(S) PART NUMBER PAGE NUMBER(S)

ACS-132	15	AFS-2167-S	42
ACS-235	19	AFS-2246	7
ACS-236	18	AFS-2247	7
ACS-236-1	18	AFS-2248	7
ACS-236-2	18	AJS-74	23, 24
ACS-236-3	18	AJS-93	14
ACS-237A	18	AJS-101	39
ACS-260	18	AJS-102A	12
ACS-301	18	AJS-106	12
ACS-322	18	AJS-107	12
ACS-351	18	AJS-108	12
ACS-355	18	AJS-109	14
ACS-366	19	AJS-110	14
ACS-369	18	AJS-111	14
ACS-371	18	AJS-112	14
ACS-385	18	AJS-113	17
ACS-393	18	AJS-113	14
ACS-394	18	AJS-114	14
ACS-435	9	AJS-115	14
ACS-450	19	AJS-116	14
ACS-451	19	AJS-117	15
ACS-451-2	19	AJS-119	15
ACS-452	19	AJS-120	15
ACS-453	19	AJS-121	15
ACS-453-1	19	AJS-122	15
ACS-453-2	19	AJS-123	15
ACS-453-3	19	AJS-124	15
ACS-466	18	AJS-125	17
ACS-467	32, 39, 40	AJS-127	15, 16
ACS-473	32, 39, 40	AJS-128A	16
ACS-478	36	AJS-129	15
ACS-480	18	AJS-130	17
ACS-483	32, 40	AJS-131	15
ACS-540	30	AJS-132	15
ACS-543	30	AJS-133	39
ACS-578	30	AJS-134	17
ACS-592	18	AJS-135	17
ACS-626	18	AJS-136A	17
ACS-645	2	AJS-138	17
ACS-647	30	AJS-139A	17
ACS-794	22	AJS-141	17
ACS-988	22	AJS-142	17
ACS-989	30	AJS-143A	17
ACS-990	30	AJS-167	24
ACS-5036	30	AJS-200	39
ACS-5070	32, 39, 40	AJS-214	22
ADS-187	10	AJS-215A	22
ADS-333	20	AJS-216	22
AFS-385A	15	AJS-221	22
AFS-545	11	AJS-223	22
AFS-610	1	AJS-282	38
AFS-1040	33	AJS-283	38
AFS-1041	33	AJS-290	21
AFS-2043	7	AJS-291	21
AFS-2044	7	AJS-292	21
AFS-2047	7	AJS-293	21
AFS-2167	5	AJS-294	21
AFS-2167-F	41	AJS-295	21
AFS-2167-G	41	AJS-296	21
AFS-2167-I	42	AJS-307	13

 PART NUMBER PAGE NUMBER(S) PART NUMBER PAGE NUMBER(S)

AJS-315	15, 40	AJS-1159	15
AJS-318	17	AJS-1197	16
AJS-319	17	AJS-1198	16
AJS-321	39	AJS-1213	12
AJS-322	34	AJS-1219	23
AJS-324	34	AJS-1220	23
AJS-355A	18	AJS-1221	27
AJS-357	34	AJS-1224	26, 27
AJS-358	34	AJS-1225	27
AJS-359	34	AJS-1226	26
AJS-379-1	14	AJS-1229	24
AJS-380	14	AJS-1231	24
AJS-386	29	AJS-1233	26, 27
AJS-407	22	AJS-1237	16
AJS-408	22	AJS-1242B	24
AJS-409	22	AJS-1244	26
AJS-412	22	AJS-1247	26
AJS-420	13	AJS-1248	26, 27
AJS-426	9	AJS-1248-1	40
AJS-432	29	AJS-1269	26, 27
AJS-475	13	AJS-1270A	20
AJS-488	34	AJS-1271A	20
AJS-492	30	AJS-1272A	20
AJS-493	30	AJS-1273A	20
AJS-494	22	AJS-1274	20
AJS-643	15	AJS-1342	18
AJS-662A	39	AJS-1343	18
AJS-747	17	AJS-1344	18
AJS-750	36	AJS-1345	18
AJS-751	18	AJS-1346	18
AJS-752	18	AJS-1453	5
AJS-753	18	AJS-1467	39
AJS-761	21	AJS-1468	30
AJS-784	21	AJS-1538	11
AJS-785	21	AJS-1542	2
AJS-786	21	AJS-1546	2
AJS-787	18	AJS-1548A	14
AJS-833	18	AJS-1549	14
AJS-839	33	AJS-1553	9
AJS-860B82-2	5	AJS-1573	23
AJS-860B88-2P1	25	APT-34E	11
AJS-873	21	AZX-1470	3
AJS-874	21	BL-1396E	23, 24
AJS-875	21	BUTF-415	34
AJS-1063	2	CAT-3/133/2	39
AJS-1129	33	CAT-3/133/3	33
AJS-1130	34	CL-677E	16
AJS-1131	34	CL-678E	22
AJS-1132	34	ED-205ME	6
AJS-1133	34	ED-206ME	6
AJS-1134	34	ED-423ME	4
AJS-1136	34	ED-424ME	4
AJS-1137	34	ED-440ME	4
AJS-1139	34	ED-441ME	4
AJS-1141	34	ED-578ME	3
AJS-1145	36	ED-684ME	3
AJS-1149	36	ED-799ME	3
AJS-1152	38	ED-868ME	3
AJS-1153	38	ED-902ME	3
AJS-1157	32	ED-915ME	4

 PART NUMBER PAGE NUMBER(S) PART NUMBER PAGE NUMBER(S)

ED-922ME	28	MH-300A201	17,26,27
ED-931ME-915	17	MH-300A229	9
ED-947ME	8	MH-300B180	6,10
ED-949ME	8	MH-300B181	5,33
ED-10500A	36	MH-300B191	5
ED-1061ME	4	MH-302B180	30
ED-1124ME	28	MH-308A187	33
ED-1244ME	3,4	MH-350A183	3
ED-1245ME	3,4	MH-400E94	5
ED-1246ME	3	MH-603A10	26
ED-1260ME	6	MH-603A12	1,2,5,9,38
ED-1302ME	3	MH-611A10	18
ED-1316ME	4	MH-611A12	5
ED-13580	6	MH-611A14	9
ED-13581	6,17	MH-616A13	26
ED-1370ME-CPTE	3	MH-201869	18
ED-1377ME	3	MM-907A41	12
ED-1412ME	3	MPCS-1E	39
ED-1420ME	3	MPCS-2E	5
ED-14480	3	MPCS-2E-F	41
ED-14834	3	MPCS-2E-G	41
ED-15004	3	MPCS-2E-I	41
ED-15341	5	MPCS-2E-S	42
ED-1609ME	4		
ED-17576	12,18,24	MPCS-4E-CPTE	34
ED-17576	14	MPCS-5E	12
ED-3259	36	MPCS-6E	10
ED-5882	15,16,17,18	MPCS-58A	14
ED-6755E	8	MPCS-83	1
ED-9072E	3	MPCS-212	32
ED-9287E	3	MPCS-216	17
ED-9291E	4	MPCS-340	24
ED-9292E	3,4	MPCS-342A	27
ED-9293E	4	MPCS-348	5
ED-9813E	6	MPCS-353	26
ED-9818E	7	MPCS-354	26,27
EM-1734	16	MPCS-364	7
EWS-194B	8	MPCS-365	7
EWS-237	4	MPCS-368	9
FF-10536	10	MPCS-374	1
MCPS-1044	9	MPCS-377	24
MH-200A161	34	MPCS-378	24
MH-200B163	5	MPCS-379	24
MH-201B100	13	MPCS-380	33
MH-201B102	12,28	MPCS-381	33
MH-201B20	18,23,24	MPCS-382	33
MH-201B21	2,12	MPCS-383	33
MH-201B22	5	MPCS-386A	28
MH-201B23	8,21,24	MPCS-387	28
MH-201B25	15	MPCS-387-1	28
MH-201B41	12,26,27,39	MPCS-390	33
MH-201B42	12	MPCS-395	5
MH-201B65	6	MPCS-397	5
MH-201B66	4,5,6,8,9,24,29	MPCS-398	5
MH-201B67	23,29	MPCS-407	28
MH-201B69	25	MPCS-411	29
MH-201B98	28	MPCS-412	29
MH-201D53	12	MPCS-413	29
MH-201D73	24	MPCS-414	29
MH-210B69	1	MPCS-418	28,36

 PART NUMBER PAGE NUMBER(S) PART NUMBER PAGE NUMBER(S)

MPCS-422	9	MPCS-442	5
MPCS-423	9	MPCS-442-F	41
MPCS-424	29	MPCS-442-G	41
MPCS-426B	12	MPCS-442-I	41
MPCS-427	28	MPCS-442-S	42
MPCS-431	5	MPCS-443	5
MPCS-431-F	41	MPCS-443-F	41
MPCS-431-G	41	MPCS-443-G	41
MPCS-431-I	42	MPCS-443-I	41
MPCS-431-S	42	MPCS-443-S	42
MPCS-432	5	MPCS-444	5
MPCS-432-F	41	MPCS-444-F	41
MPCS-432-G	41	MPCS-444-G	41
MPCS-432-I	42	MPCS-444-I	41
MPCS-432-S	42	MPCS-444-S	42
MPCS-433	5,33	MPCS-445	5
MPCS-433-F	35,41	MPCS-445-F	41
MPCS-433-G	35,41	MPCS-445-G	41
MPCS-433-I	35,41	MPCS-445-I	41
MPCS-433-S	35,42	MPCS-445-S	42
MPCS-434	5,33	MPCS-446	33
MPCS-434-F	35,41	MPCS-446-F	35
MPCS-434-G	35,41	MPCS-446-G	35
MPCS-434-I	35,41	MPCS-446-I	35
MPCS-434-S	35,42	MPCS-446-S	35
MPCS-435	5	MPCS-447	33
MPCS-435-F	41	MPCS-447-F	35
MPCS-435-G	41	MPCS-447-G	35
MPCS-435-I	42	MPCS-447-I	35
MPCS-435-S	42	MPCS-447-S	35
MPCS-436	5	MPCS-448	33
MPCS-436-F	41	MPCS-448-F	35
MPCS-436-G	41	MPCS-448-G	35
MPCS-436-I	41	MPCS-448-I	35
MPCS-436-S	42	MPCS-448-S	35
MPCS-437	5	MPCS-449	33
MPCS-437-F	41	MPCS-449-F	35
MPCS-437-G	41	MPCS-449-G	35
MPCS-437-I	41	MPCS-449-I	35
MPCS-437-S	42	MPCS-449-S	35
MPCS-438	5	MPCS-455	21
MPCS-438-F	41	MPCS-457A	18
MPCS-438-G	41	MPCS-458	13
MPCS-438-I	41	MPCS-461	39
MPCS-438-S	42	MPCS-462	39
MPCS-439	5	MPCS-465	36
MPCS-439-F	41	MPCS-470A	25
MPCS-439-G	41	MPCS-471	25
MPCS-439-I	41	MPCS-472A	25
MPCS-439-S	42	MPCS-474	12
MPCS-440	5	MPCS-475	1
MPCS-440-F	41	MPCS-476	1
MPCS-440-G	41	MPCS-481	25
MPCS-440-I	41	MPCS-482	25
MPCS-440-S	42	MPCS-483	23
MPCS-441	5	MPCS-484	23
MPCS-441-F	41	MPCS-485	12
MPCS-441-G	41	MPCS-486	12
MPCS-441-I	41	MPCS-487	17
MPCS-441-S	42	MPCS-488A	12

PART NUMBER PAGE NUMBER(S) PART NUMBER PAGE NUMBER(S)

MPCS-489	39	MPCS-1048-S	41
MPCS-490	39	MPCS-1052	6
MPCS-491	5	MPCS-1053	6
MPCS-492	39	MPCS-1059-COLL	28
MPCS-495	5	MPCS-1094A	40
MPCS-501	1	MPCS-1095	10
MPCS-501-5	40	MPCS-1100	40
MPCS-501-8	40	MPCS-1117	40
MPCS-501-10	40	MPCS-1118	40
MPCS-501-11	40	MPCS-1119	40
MPCS-501-12	40	MPCS-1120	40
MPCS-501-13	40	MPCS-1121	40
MPCS-509	25	MPCS-1121-1	40
MPCS-546	33	MPCS-1121-2	40
MPCS-552	28	MPCS-1121-3	40
MPCS-554	28	MPCS-1121-4	40
MPCS-555	28	MPCS-1121-5	40
MPCS1-125	30	MPCS-1121-6	40
MPCS-561	30	MPCS-1124	40
MPCS-562	30	MPCS-1126	40
MPCS-564	30	MPCS-1151	1
MPCS-565	30	MPCS-1151-1	1
MPCS-594	9	MPCS-1151-2	1
MPCS-597	2	MPCS-1152	1
MPCS-600	1	MPCS-1155	40
MPCS-610	1	MPCS-1172	19
MPCS-610-1	1	MPCS-1180	40
MPCS-610-2	1	MPCS-1180-1	40
MPCS-610-3	1	MPCS-1180-2	40
MPCS-610-4	1	MPCS-1180-3	40
MPCS-620	2	MPCS-1181	40
MPCS-620-1	2	MPCS-1181-1	40
MPCS-620-2	2	MPCS-1181-2	40
MPCS-620-3	2	MPCS-1192	30
MPCS-620-4	2	MPCS-1310	33
MPCS-620-6	2	MPCS-1433	12
MPCS-620-7	2	MPCS-2112	40
MPCS-620-8	2	MPCS-2123	40
MPCS-620-9	2	MPCS-3167	8
MPCS-620-10	2	MPCS-3168	8
MPCS-620-11	2	MPCS-4001	3
MPCS-620-12	2	MPCS-4002	6
MPCS-620-13	2	MPCS-4011	4
MPCS-860B81-2P	5	MPCS-4011-1	4
MPCS-860B83-4	7	MPCS-4048	23
MPCS-860B84-1	6	MPCS-4048-1	23
MPCS-860B85-1	7	MPCS-4049	23
MPCS-860B86-1P11	6	MPCS-4068	11
MPCS-860B87-1	10	MPCS-4130	40
MPCS-860B89-2	33	MPCS-4133	15
MPCS-860B94-1P	33	MPCS-4144	5
MPCS-860B99-1	6	MPCS-4145	32
MPCS-860C1-1	3	MPCS-4180	39
MPCS-865B95-1	28	MPCS-4183	23
MPCS-865B96-1	28	MPCS-4187	33
MPCS-1047	5	MPCS-4187-F	35
MPCS-1048	5	MPCS-4187-G	35
MPCS-1048-F	41	MPCS-4187-I	35
MPCS-1048-G	41	MPCS-4187-S	35
MPCS-1048-I	41	MPCS-4191	23

 PART NUMBER PAGE NUMBER(S) PART NUMBER PAGE NUMBER(S)

PART NUMBER	PAGE NUMBER(S)	PART NUMBER	PAGE NUMBER(S)
MPCS-4193-COLL	23	PL-4025	13
MPCS-4194-CPTE	23	PL-5725	18
NL-2ME	3	PL-5875	17, 22
NL-3ME	3, 12, 15, 24	PL-5877	7
NL-4ME	25	PL-5959	15
NL-5ME	40	PL-6006	7
NL-76ME	4	PL-6647	22
NL-234ME	5, 12, 23, 28	PTL-369	10
NL-236ME	9, 26, 33	PTL-373	11
NL-237ME	1, 9, 10, 26, 27, 29	RCFA-100K/J250	28
NL-3M3	24, 33	RCPH-100K/K500	28
NL-671E	19, 22	RWVE-4R7/J2K5	3
NL-671ME	20	SCDD-1N4004	3
NL-673E	34	SL-18ME	9
NL-693E	1	SL-32ME	29
NL-7M7	1, 22	SL-33ME	1
NL-773E	19	SL-53ME	24
NL-785ME	19	SL-54ME	15
NL-11M1	28	SL-56ME	34
NL-13M1	18	SL-60ME	15, 21
NL-1341	7	SL-65ME	15
NL-16U1	14	SL-70ME	13
PCBA-93B	28	SL-174ME	11
PCI-323	11	SL-178ME	13
PDS-1178-CPTE	33, 35	SL-193ME	5, 13
PF12-024171-15	20	SL-194ME	13
PF12-024172-15	20	SL-196ME	13
PF12-305144-15	20	SL-200ME	28
PF12-640130-55	20	SL-3N5	7, 22
PF12-640150-55	20	SL-398ME	3
PF14-215013-13	21	SL-4H4	22
PF16-049020-11	20	SL-453ME	1
PF16-049021-11	20	SL-500ME	25
PF91-010215-05	31	SL-502ME	15, 34
PF91-029684-05	18	SL-502ME	14
PF91-029959-91	18	SL-504ME	26, 40
PF91-069165-15	20	SL-510ME	34
PF91-167680-05	20	SL-511ME	17, 24, 40
PF91-168945-05	20	SL-511ME	14
PF91-174063-11	20	SL-511ME	14
PF91-174066-92	20	SL-512ME	1, 2, 15, 16, 21, 34
PF91-174067-15	20	SL-513ME	15, 24, 34
PF91-174068-15	20	SL-514ME	3, 40
PF91-174070-15	20	SL-515ME	3, 15, 17
PF91-174475-91	30	SL-516ME	23
PL-3ME	17	SL-517ME	10
PL-103ME	23	SL-519ME	10
PL-458E	12, 13, 39	SL-522ME	29
PL-459E	34	SL-523ME	9, 21
PL-461E	12	SL-523ME	14
PL-462E	12	SL-524ME	5, 15, 20, 21, 25
PL-897	19	SL-525ME	9, 12, 17, 18, 21, 33
PL-929E	15, 24	SL-525ME	14
PL-993ME	34	SL-526ME	25
PL-1026	23	SL-527ME	14
PL-1055	15, 19, 23, 40	SL-528ME	14
PL-1332	22	SL-534ME	23, 29
PL-1837	34	SL-535ME	4, 25
PL-2033E	23	SL-536ME	26, 27, 40
PL-3390	15	SL-537ME	9, 24
PL-3910	19		

PART NUMBER	PAGE NUMBER(S)	PART NUMBER	PAGE NUMBER(S)
SL-538ME	23	WL-2ME	14
SL-540ME	20	WL-3ME	1,3,5,8,10,12,15,
SL-552ME	26,27	CONT.	16,17,18,24,29,34,
SL-554ME	23	CONT.	38,40
SL-642ME	18	WL-3ME	14
SL-646ME	5,15,17	WL-3ME	14
SL-648ME	15,29	WL-4ME	5,9,12,17,18,20,
SL-651ME	15	CONT.	21,25,26,27,29,33
SL-654ME	17,26	WL-4ME	14
SL-655ME	33	WL-4ME	14
SL-665ME	1	WL-5ME	1,4,6,8,9,10,12,
SL-666ME	9	CONT.	23,24,25,26,27,29,
SL-715ME	26,27	CONT.	40
SL-796ME	5	WL-6ME	5,12,23,26,27
SL-9H9	17	WL-19ME	3
SL-11D11	9	WL-67ME	25
SL-11D7	2	WL-174	17
SL-11S17	18	WL-254E	19
SL-11S5	19	WL-333ME	5
SL-1140ME	12,20	WL-1299E	1,7,18,28
SL-1155	18	WL-1300E	2,7,18
SL-1179ME	12,20,26,27	WL-1301E	2,7,11,18,29
SL-1198ME	19,21	WL-1301E	14
SL-13D15	7	WL-1303E	14
SL-17H17	19	WL-1304E	13
SL-3D11	10,18	WL-1305E	34
SL-3D17	24	WL-1548E	9
SL-3H11	22	WL-1572E	18,24
SL-3017	33	WL-1920	9,28
SL-5324E	7	WL-1947	24,33
SL-5342E	34	WL-1947	14
SL-7D15	7	WL-1947T	12
SL-7D19	1	WL-1995	7
SL-9C15	1,25	WL-2063	7
SL-9D11	6,9	XE-108P3	18
SL-9D19	9	XE-111A4-X5	28
SPGL-416	15	XE-111A5-X25	5
SPGL-510	16	XE-111A5-X5	33
SPGL-608	13	XE-111B6-1	3
SPGL-617E	34	XE-125C5-16	18
SPGL-902E	34	XE-155A2-10	28
SPGL-1073ME	26	XE-155A3-5	28
SPGL-1191E	23	XE-155A3-16	28
SPGL-3489	7	XE-157A2-50	33
SSID-2817A-250	32,40	XE-170A4-7	28
TCF-496	13,22	XE-170J1-4	33
UEM-211E	11	XE-170J1-6	33
UMA-40	10	XE-176A3-2X5	28
UP-1958	28	XE-176A3-4X5	28
UPL-204	10	XE-179A4	7
UPL-261A	11	XE-180A3-3X12	10
UPL-1338	11	XE-189C2	6
UPL-1339	11	XE-189C3	6
UPL-1341	11	XE-189D2	6
UPL-1342	11	XE-189D3	6
UPL-1353	11	XE-190A	15
UPL-1359	23	XE-190D14	12,29
UPL-1517	19	XE-210M3	3,10
WL-1ME	10	XE-227M204	28
WL-2ME	3,25,26	XE-228A1	33

 PART NUMBER PAGE NUMBER(S) PART NUMBER PAGE NUMBER(S)

XE-263MS	18	XF-420A1	16
XE-265H1	33	XF-420A2	23,24
XE-266C13	28	XF-470F3	37
XE-266E106	28	XF-470F4	26,27
XE-266E112	28	XF-491A1	24
XE-266F162	28	XF-704B4	11
XE-269E5	33	XF-789B501	10
XE-269MB06	28	XF-791B502	10
XE-269MB12	28	XF-792A611	10
XE-269MB15	28	XF-835D1	11
XE-269MB20	28	XF-995A2	10,24
XE-269MC2	28	XF-995B2	10,19,20,23
XE-315E1	6	XH-201C1	22
XE-347A1	12	XH-201C21	18,19
XE-347A1	14	XH-201C22	6
XE-347A2	18,24	XH-201C32	18
XE-371E2	1,26	XH-201C36	22
XE-384C4	5	XH-201C41	18,29
XE-386B2	5	XH-201C42	19
XE-386B5	5	XH-205C11	22
XE-386C2	5	XH-300A6	12
XE-392C6	36	XH-300A6	14
XE-409C14	4	XH-300C62	6
XE-602B11	3	XH-300C63	28
XE-641F6	3	XH-301C83	28
XE-805B1	28	XH-350A63	5,6
XE-823A7	9	XH-400E54	19
XE-823B3	9	XH-500A24	17
XE-829E2	9	XH-604A3	1
XE-833D832	3	XH-604A5	7,11
XE-833J343	3	XH-604A8	19
XE-838A2	3	XH-604B4	17
XE-838A7	3	XH-662B3	33
XE-840B1	3	XH-705C16	15,17,40
XE-860B52-2	9	XH-707A16	15
XE-869A1	32,39,40	XH-707A17	22
XE-869C1	28	XH-901A5	21
XE-869C6	6	XH-923C12	1
XE-869D1	32,39,40	XH-923G1	1
XE-870L21	39	XH-923H1	1
XE-882H1	3	XH-924A5	1,2
XE-940C34	9	XH-924K2	1,2
XE-940M83	3	XH-924N2	1
XE-981B3	9	XH-60484	14
XE-981M10	9	XM-110E10	34
XF-115C1	11	XM-110E25	22
XF-342B1	10,15,16	XM-289B30	1
XF-346A1	15	XM-399A10	2
XF-370G2	20	XM-399B10	2
XF-375A1	10	XM-412A1	7
XF-376D4	22	XM-501B3	17
XF-383B1	16	XM-503B4	17
XF-386B1	10,19,23	XM-542L1	17
XF-386B3	10,22	XM-542L1	14
XF-386C1	15,24	XM-542M1	14
XF-406E2	36	XM-590A12	17
XF-409D1	16	XM-601A6	17
XF-412A41	22	XM-601A7	17
XF-413C10	23	XM-651B3	15
XF-413F2	24	XM-899A2	12

PART NUMBER PAGE NUMBER(S) PART NUMBER PAGE NUMBER(S)

XM-902A2	18		
XM-932A2	5		
XM-933A1	5		
XM-65183	15		
ZH-38-2	2		
ZH-39-910	2		
ZH-474M	22		
ZH-475M	22		
ZH-551M	22		
ZH-591M	22		
ZH-634M	22		
ZH-933M	21		
ZH-1185M	22		
ZH-1375M	22		
ZH-1376M	22		
ZH-1757A	2		
ZH-2018	10		
ZH-2108	20		
ZH-2109	15		
ZH-2700	2		
ZH-3163	2		
ZH-3165	2		
ZH-3166	5, 7, 38		
ZH-3167	7		
ZH-3171	16		
ZH-3175	15		
ZH-3176	34		